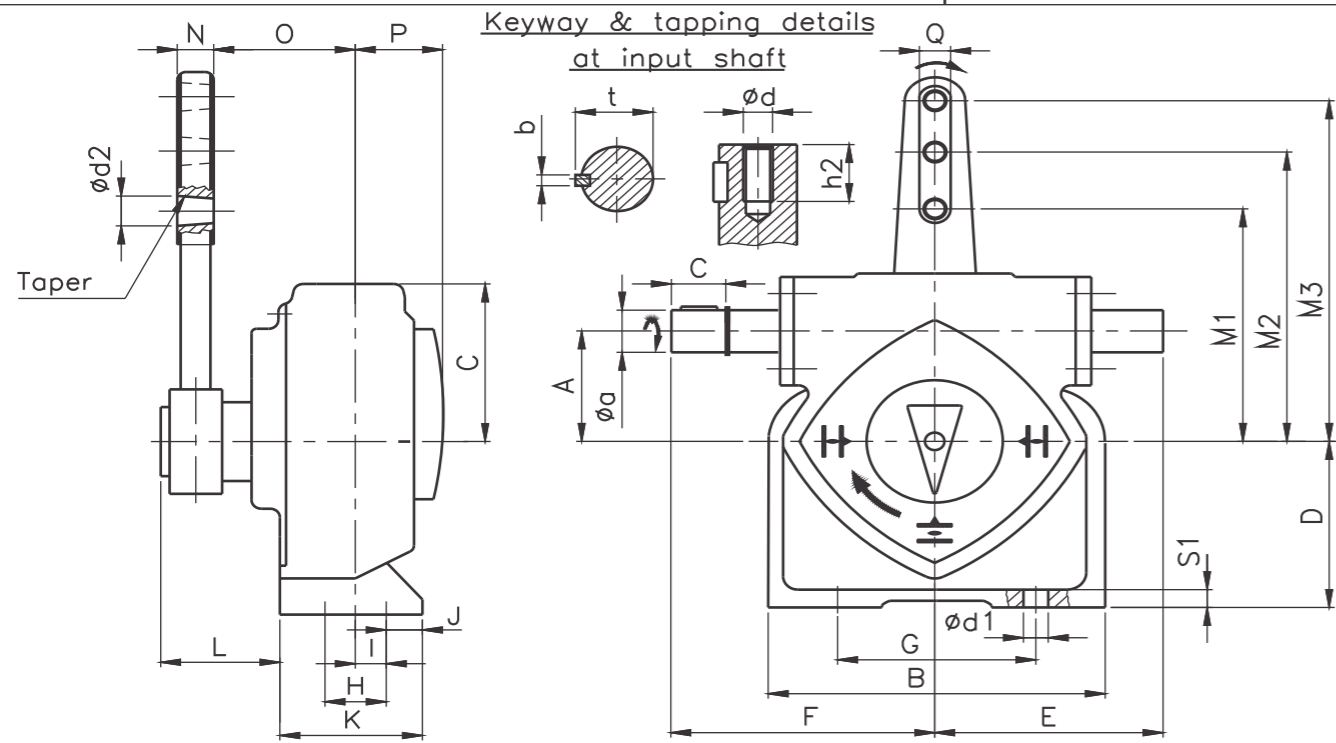
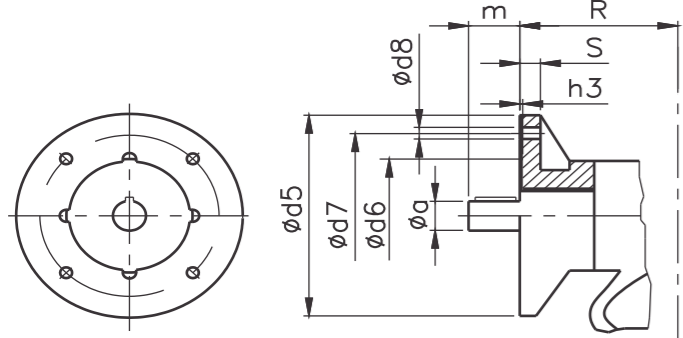


**DIMENSIONS WORM GEARBOX  
- FOOT MOUNTED**

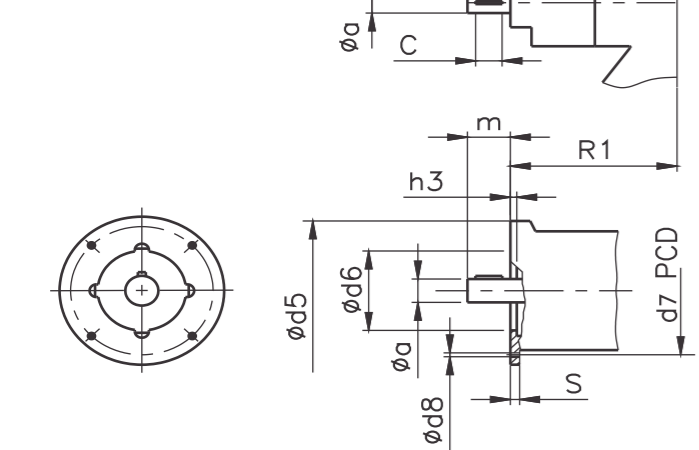
GF 63.2 - GF 125.2



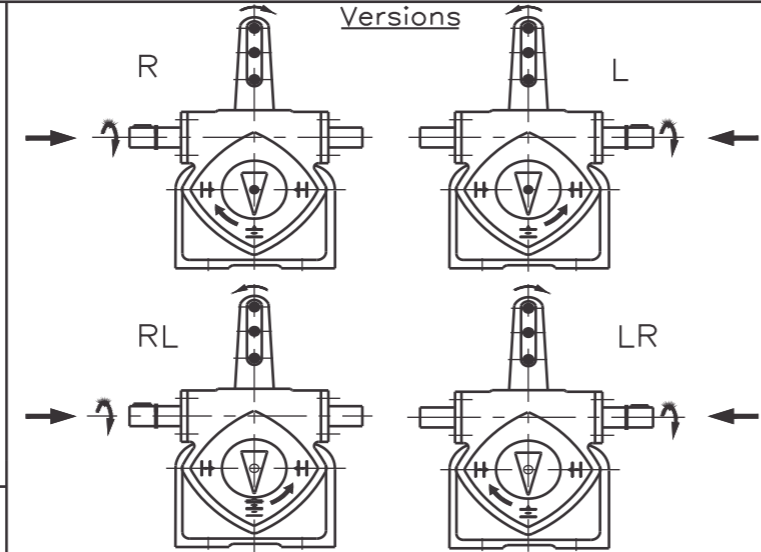
**Mounting flange for multi-turn actuator  
as per DIN 3210**



**Foot mounted worm gear box  
with reduction unit  
(GF with VZ 4)**



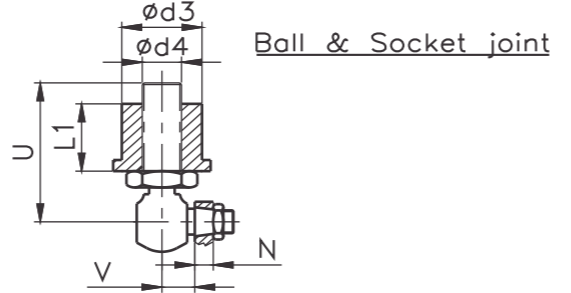
**Versions**



Description of the 4 different versions  
(With view on pointer cover and view from input side)

Code	Direction of rotation at input shaft	Direction of rotation at output drive	Position of the worm shaft
LR	Clockwise	Clockwise	Right side
RL	Clockwise	Anti-clockwise	Left side
L	Clockwise	Anti-clockwise	Right side
R	Clockwise	Clockwise	Left side

**Ball & Socket joint**



**DIMENSIONS WORM GEARBOXES  
- FOOT MOUNTED**

GF 63.2 - GF 125.2

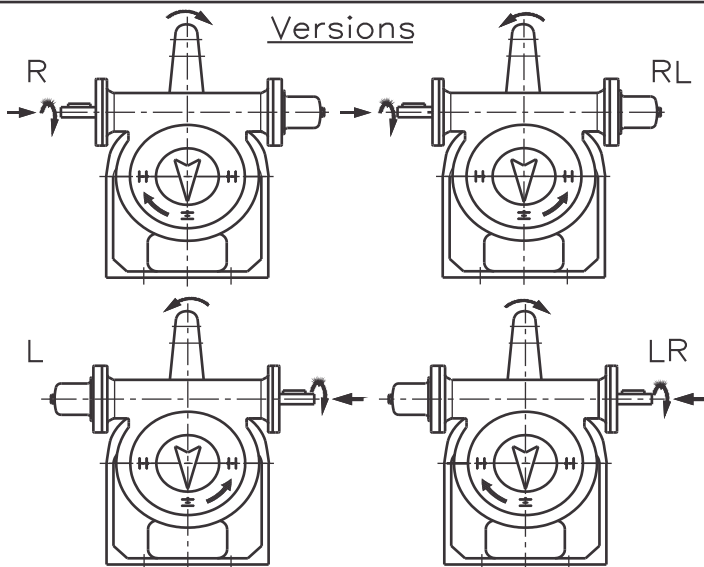
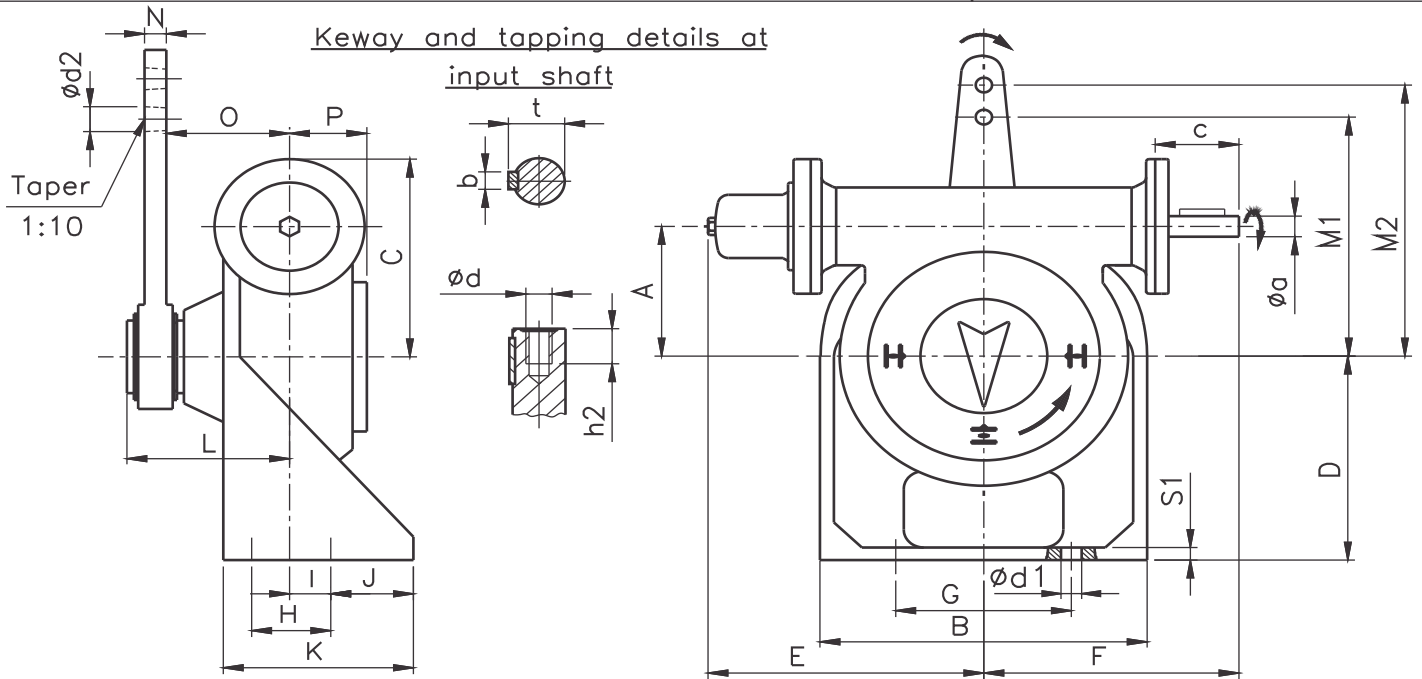
Dimensions	GF 63.2		GF 80.2		GF 100.2		GF 100/VZ4		GF 125.2		GF 125.2/VZ4	
A	63		80		100				125			
B	190		225		265				335			
C	96		113		149				174			
D	130		150		190				210			
E	147		156		220				230			
F	159		165		203				234			
G	110		110		140				200			
H	45		50		60				60			
I	25		23		25				40			
J	15		15		25				30			
K	90		100		125				150			
L	123		125		150				170			
M1	150		150		300				300			
M2	200		200		—				350			
M3	250		250		400				400			
N h11	26		26		30				30			
O	82		87.5		100				123			
P	53		63		76				81			
Q	32		32		40				40			
R	118		125		163		—		174		—	
R1	—		—		—		222		—		234	
S	10		10		12				18		12	
S1	16		16		16				18			
U	100		100		100				100			
V	28		28		32				32			
W	—		—		—		218		—		228	
phi a f7	20		20		20				30		20	
b	6		6		6				8		6	
c	40		40		43		40		60		40	
phi d	M 6		M 6		M 6				M 10		M 6	
phi d1	14		18		18				18			
phi d2 H8	22		22		26				26			
phi d3	55		55		55				55			
phi d4	M 24 x 1.5		M 24 x 1.5		M 24 x 1.5				M 24 x 1.5			
phi d5	125		125		125				175		125	
phi d6	60		60		60				100		60	
phi d7 PCD	102		102		102				140		102	
phi d8	11.5		11.5		11.5				18		11.5	
h2	16		16		16				22		16	
h3	5		5		4				5		4	
m	40		40		40				60		40	
t	22.5		22.5		22.5				33		22.5	
DIN 3210	G0		G0		G0				G½		G0	

We reserve the right to alter data according to improvements made. Previous documents become invalid with the issue of this document.

# Dimension Datasheet for Part-turn Worm Gearboxes

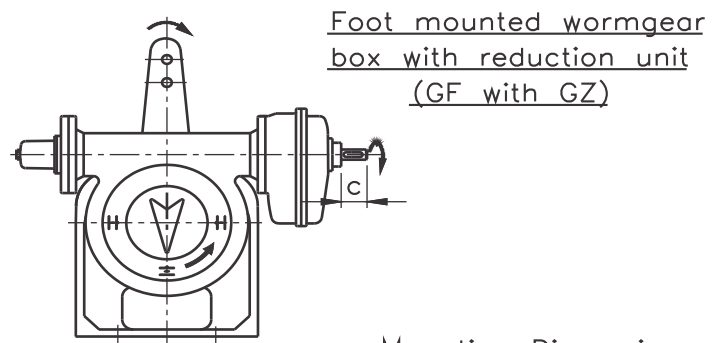
## DIMENSIONS WORM GEARBOXES - FOOT MOUNTED

GF 160 - GF 250

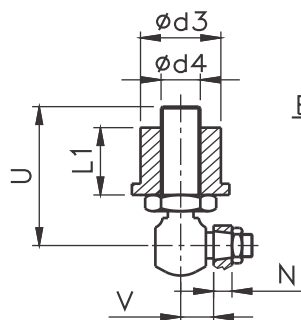
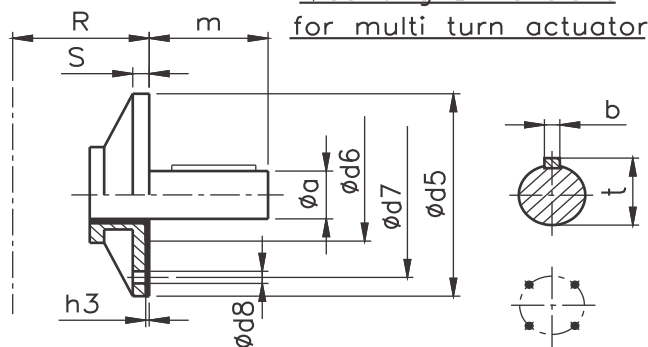


Description of the 4 different versions  
(With view on pointer cover and view from input side)

Code	Direction of rotation at input shaft	Direction of rotation at output drive	Position of the worm shaft
LR	Clockwise	Clockwise	Right side
RL	Clockwise	Anti-clockwise	Left side
L	Clockwise	Anti-clockwise	Right side
R	Clockwise	Clockwise	Left side

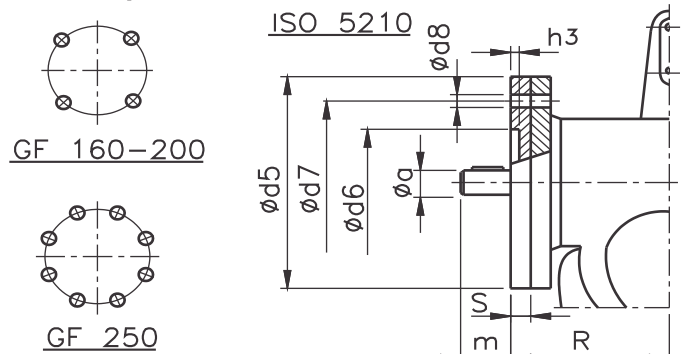


Mounting Dimensions  
for multi turn actuator



Ball & Socket joint

Mounting dimensions for multi turn actuator



# Dimension Data sheet for Part-turn Worm Gearboxes

## DIMENSIONS WORM GEARBOXES - FOOT MOUNTED

**GF 160 - GF 250**

Dimensions	GF 160	GF 160 / GZ 14		GF 200	GF 200 / GZ 16			GF 250	GF 250 / GZ 25		
i (GZ)		4:1	8:1		4:1	8:1	16:1		4:1	8:1	16:1
A		160			200				250		
B		410			500				630		
C		250			305				400		
D		300			375				380		
E		340			400				490		
F	260	—		340	—			420	—		
G		220			360				400		
H		120			180				125		
I		114			141				90		
J		60			50				45		
K		250			300				260		
L		202			278				257		
M1		400			500				600		
M2		500			600				800		
N h11		30			40				42		
O		143			198				211		
P		90			110				132		
R	210	405		274	485			336	567		
S	10	12		14	17	12		16	17	12	
S1		20			30				30		
U		100			130				130		
V		32			43				43		
c	53	43		79	60	43		105	60	43	
∅d	M 8	M 6		M 16		M 8	M 6	M 16	M 8	M 6	
∅d1		26			33				33		
∅d2 H8		26			38.5				38		
∅d3		55			65				65		
∅d4		M 24 x 1.5			M 24 x 1.5				M 24 x 1.5		
h2	16	12		32	16	12		32	16	12	

### *Mounting dimensions for multi-turn actuator*

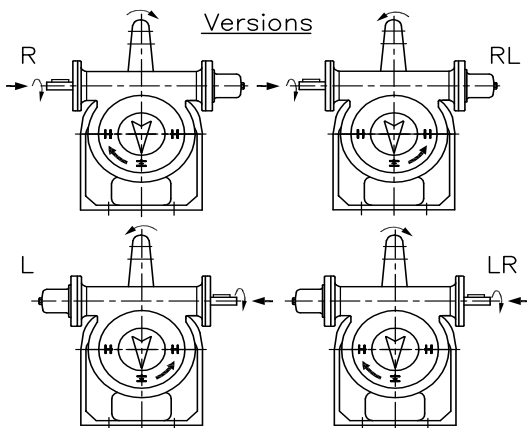
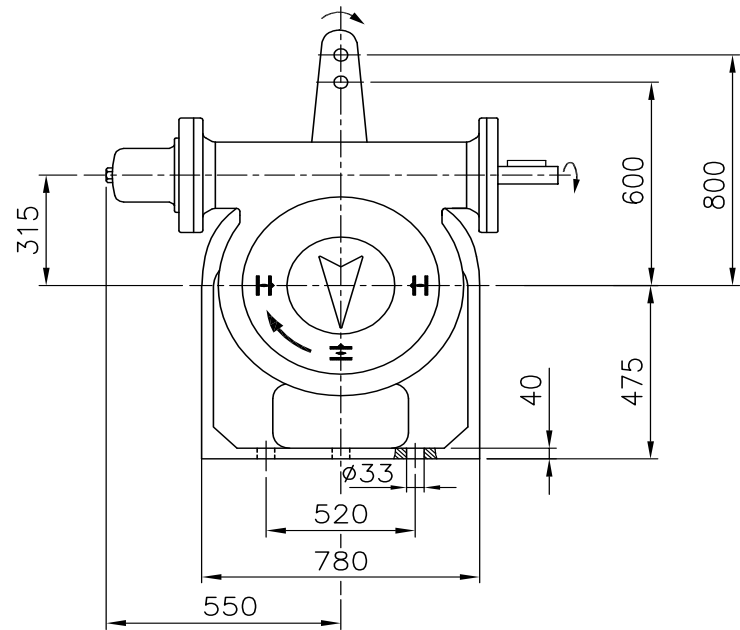
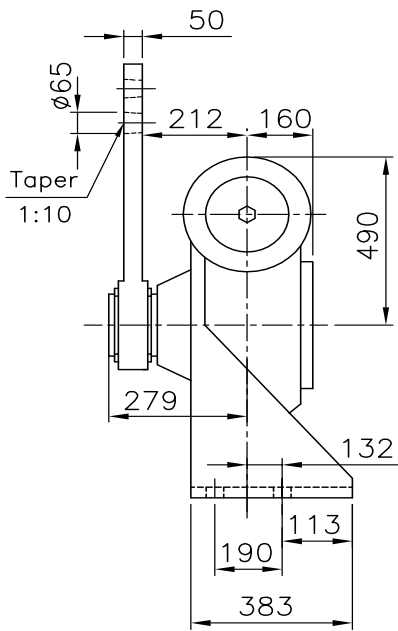
ISO 5210	DIN 3210	∅a g6	b	∅d5	∅d6	∅d7	∅d8	h3	m	t	Weight	
											kg	lbs
F 10	—	20	6	125	70	102	11	4	40	22.5	1	2.2
—	G0	20	6	125	60	102	11	4	40	22.5	1	2.2
F 14	G½	30	8	175	100	140	18	5	50	33	2.3	5
F 16	G3	40	12	210	130	165	22	6	80	43	5	11
F 25	—	50	14	300	200	254	18	6	100	53.5	11	24
—	G4	50	14	300	160	254	18	6	100	53.5	11	24

We reserve the right to alter data according to improvements made. Previous documents become invalid with the issue of this document.

# Dimension Data sheet for Part-turn Worm Gearboxes

## DIMENSIONS WORM GEARBOXES - FOOT MOUNTED

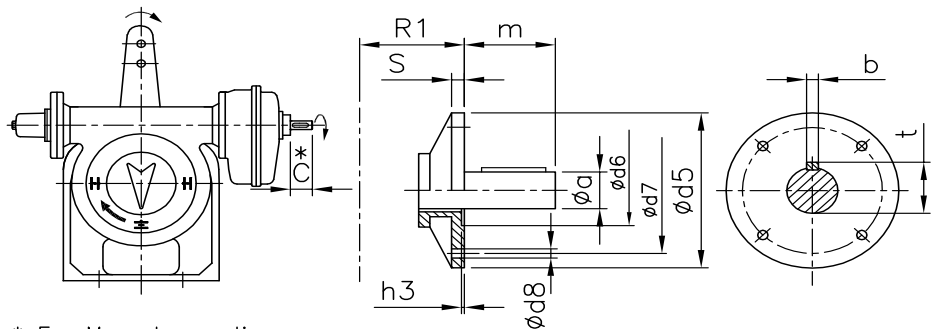
**GF 315**  
**GF 315 + GZ 30**



Description of the 4 different versions  
(With view on pointer cover and view from input side)

Code	Direction of rotation at input shaft	Direction of rotation at output drive	Position of the worm shaft
LR	Clockwise	Clockwise	Right side
RL	Clockwise	Anti-clockwise	Left side
L	Clockwise	Anti-clockwise	Right side
R	Clockwise	Clockwise	Left side

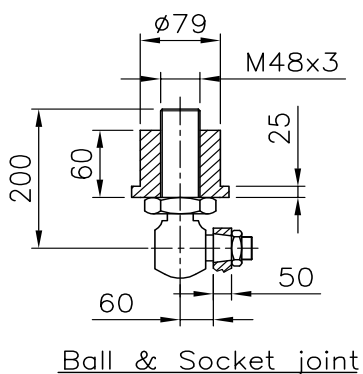
### Foot Mounted Worm Gearbox with Reduction unit (GF+GZ)



\* For Manual operation

### Mounting dimensions for multi turn actuator

Ratio	ISO:5210	DIN:3210	$\phi a$	$\phi d5$	$\phi d7$	$\phi d6$	$\phi d8$	h3	S	b	t	m	R1	C*
8:1 & 16:1	F14	G 1/2	30g6	175	140	100	18	5	17	8	33	60	666	63
32:1	F10	-	20g6	125	102	70	11	4	12	6	22.5	40	685	43
	-	G0	20g6	125	102	60	11	4	12	6	22.5	40	685	43



Ball & Socket joint

### Mounting dimensions for multi turn actuator-ISO:5210

