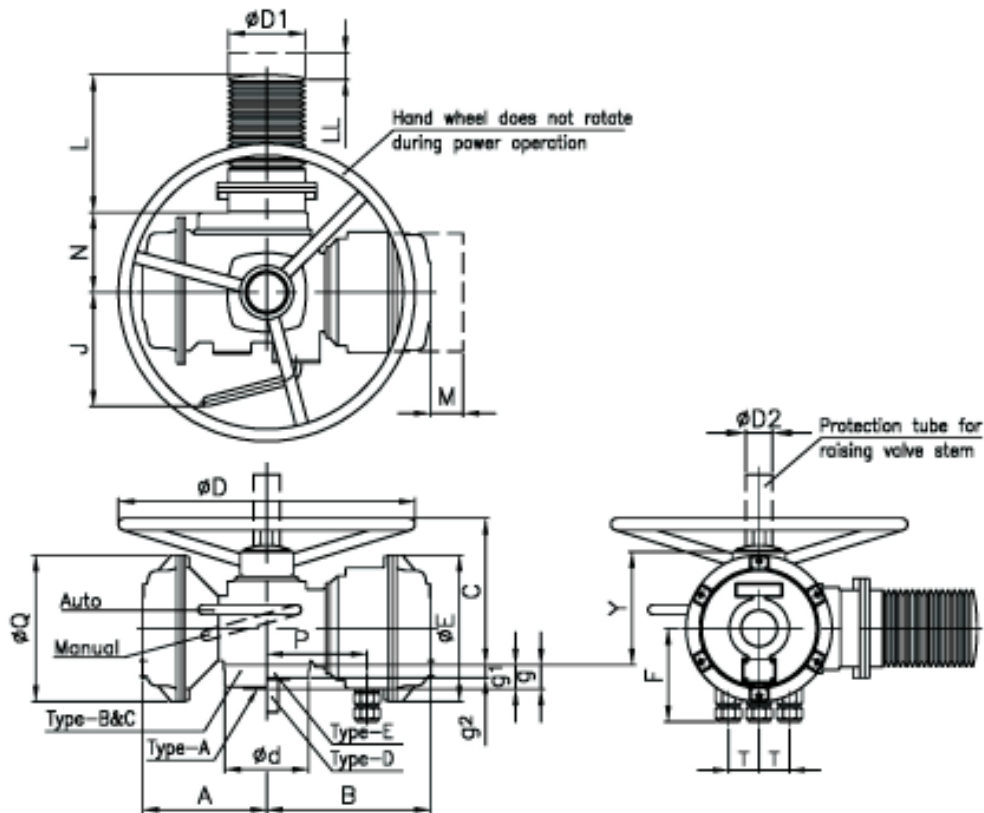


# Dimension Sheet, Ex-Proof NORM Actuator

## Explosion proof norm actuator (With Screw Type Customer Terminals)

SAEx3 – SAEx100  
SAREx6 – SAREx100



Dimensions	SAEx3 & SAEx6 SAREx6	SAEx12 & SAEx15 SAREx12 & SAREx15	SAEx25 & SAEx30 SAREx25 & SAREx30	SAEx50 & SAEx60 SAREx50 & SAREx60	SAEx100 SAREx100
A	226	226	260	260	287
B	318	318	343	343	369
C	240	240	293	293	376
$\phi D$	250	250	360	640	800
$\phi D1$	110 – 125	110 – 125	110 – 160	125 – 160	125 – 200
$\phi D2$	42 x 3.3	60 x 3.7	76 x 3.7	76 x 3.7	89 x 4.1
$\phi E$	305	305	305	305	305
F	185	185	185	185	185
J	185	185	225	225	240
L max.	223	223	300	325	331
LL min.	35	35	45	45	60
M min.	140	140	140	140	140
N	110	110	170	170	206
P	187	187	212	212	238
$\phi Q$	215	215	305	305	305
R (Cable Gland Thread)	2 Nos M32x1.5 1 No. M25x1.5	2 Nos M32x1.5 1 No. M25x1.5	2 Nos M32x1.5 1 No. M25x1.5	2 Nos M32x1.5 1 No. M25x1.5	2 Nos M32x1.5 1 No. M25x1.5
T	58	58	58	58	58
Y	208	208	256	256	276
$\phi d$	125	125	175	175	210
g (TYPE– A)	35 / 73	37 / 67	51 / 95	51 / 95	69 / 119
g1 (TYPE– B & C)	50	50	65	65	80
g2 (TYPE– D & E)	15	15	22	22	30
DIN 3210 Designation	G0	G0	G $\frac{1}{2}$	G $\frac{1}{2}$	G3

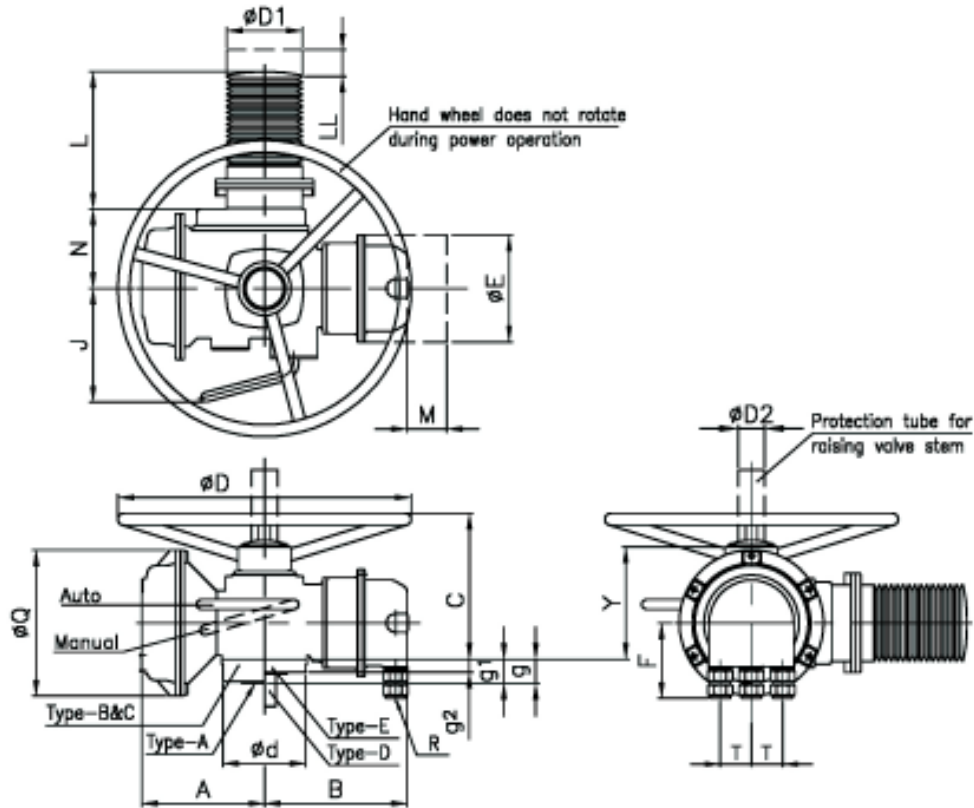
We reserve the right to alter data, dimensions and weights according to improvement made.  
Figures and diagrams are not binding.

(all dimensions are in mm)

**suma®**

## Explosion proof norm actuator (With Plug in Type Customer Terminals)

SAEx3 – SAEx100  
SAREx6 – SAREx100



Dimensions	SAEx3 & SAEx6 SAREx6	SAEx12 & SAEx15 SAREx12 & SAREx15	SAEx25 & SAEx30 SAREx25 & SAREx30	SAEx50 & SAEx60 SAREx50 & SAREx60	SAEx100 SAREx100
A	226	226	260	260	287
B	280	280	306	306	332
C	240	240	293	293	376
$\phi D$	250	250	360	640	800
$\phi D1$	110 – 125	110 – 125	110 – 160	125 – 160	125 – 200
$\phi D2$	42 x 3.3	60 x 3.7	76 x 3.7	76 x 3.7	89 x 4.1
$\phi E$	230	230	230	230	230
F	185	185	185	185	185
J	185	185	225	225	240
L max.	223	223	300	325	331
LL min.	35	35	45	45	60
M min.	140	140	140	140	140
N	110	110	170	170	206
P	187	187	212	212	238
$\phi Q$	215	215	305	305	305
R (Cable Gland Thread)	2 Nos M32x1.5 1 No. M25x1.5	2 Nos M32x1.5 1 No. M25x1.5	2 Nos M32x1.5 1 No. M25x1.5	2 Nos M32x1.5 1 No. M25x1.5	2 Nos M32x1.5 1 No. M25x1.5
T	58	58	58	58	58
Y	208	208	256	256	276
$\phi d$	125	125	175	175	210
g (TYPE– A)	35 / 73	37 / 67	51 / 95	51 / 95	69 / 119
g1 (TYPE– B & C)	50	50	65	65	80
g2 (TYPE– D & E)	15	15	22	22	30
DIN 3210 Designation	G0	G0	G $\frac{1}{2}$	G $\frac{1}{2}$	G3

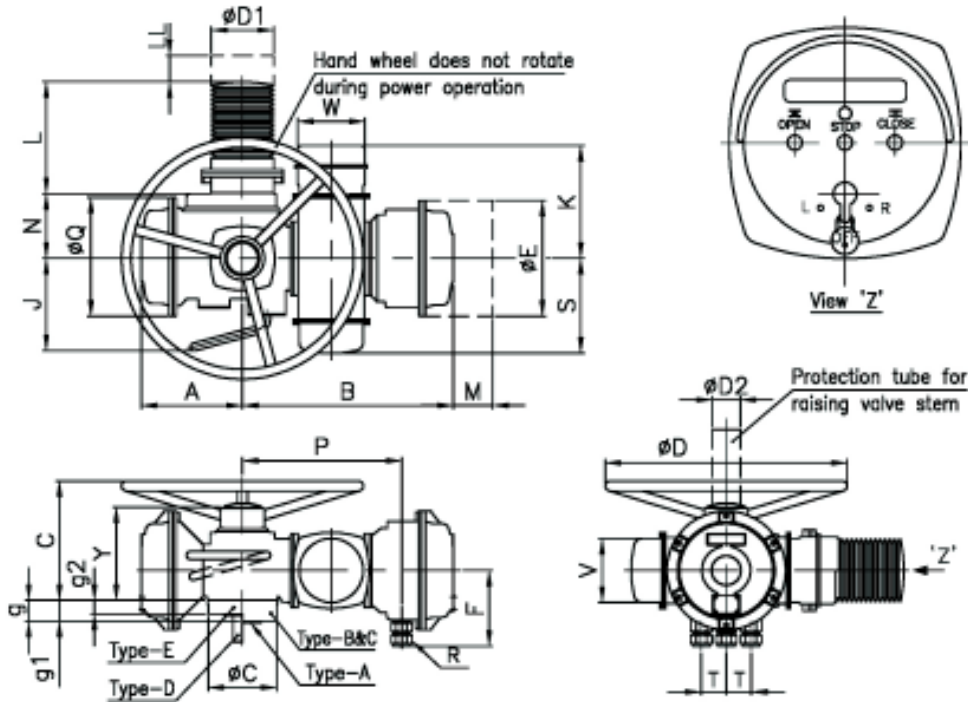
We reserve the right to alter data, dimensions and weights according to improvement mode. (all dimensions are in mm)  
Figures and diagrams are not binding.

**auma®**

# Dimension Sheet, Ex-Proof COMPACT Actuator

## Explosion proof compact actuator (With Screw Type Customer Terminals)

SACEx3 – SACEx100  
SARCEx6 – SARCEx100



Dimensions	SACEx3 & SACEx6 SARCEx6	SACEx12 & SACEx15 SARCEx12 & SARCEx15	SACEx25 & SACEx30 SARCEx25 & SARCEx30	SACEx50 & SACEx60 SARCEx50 & SARCEx60	SACEx100 SARCEx100
A	226	226	260	260	287
B	550	550	535	535	561
C	240	240	293	293	376
ØD	250	250	360	640	800
ØD1	110 – 125	110 – 125	110 – 160	125 – 160	125 – 200
ØD2	42 x 3.3	60 x 3.7	76 x 3.7	76 x 3.7	89 x 4.1
ØE	305	305	305	305	305
F	185	185	185	185	185
J	185	185	225	225	240
K	348	348	348	348	348
L max.	223	223	300	325	331
LL min.	35	35	45	45	60
M min.	140	140	140	140	140
N	110	110	122	122	206
P	380	380	404	404	430
ØQ	215	215	305	305	305
R (Cable Gland Thread)	2 Nos M32x1.5 1 No. M25x1.5	2 Nos M32x1.5 1 No. M25x1.5	2 Nos M32x1.5 1 No. M25x1.5	2 Nos M32x1.5 1 No. M25x1.5	2 Nos M32x1.5 1 No. M25x1.5
S	227	227	227	227	227
T	58	58	58	58	58
V	185	185	185	185	185
W	185	185	185	185	185
Y	208	208	256	256	276
Ød	125	125	175	175	210
g (TYPE- A)	35 / 73	37 / 67	51 / 95	51 / 95	69 / 119
g1 (TYPE- B & C)	50	50	65	65	80
g2 (TYPE- D & E)	15	15	22	22	30
DIN 3210 Designation	G0	G0	G½	G½	G3

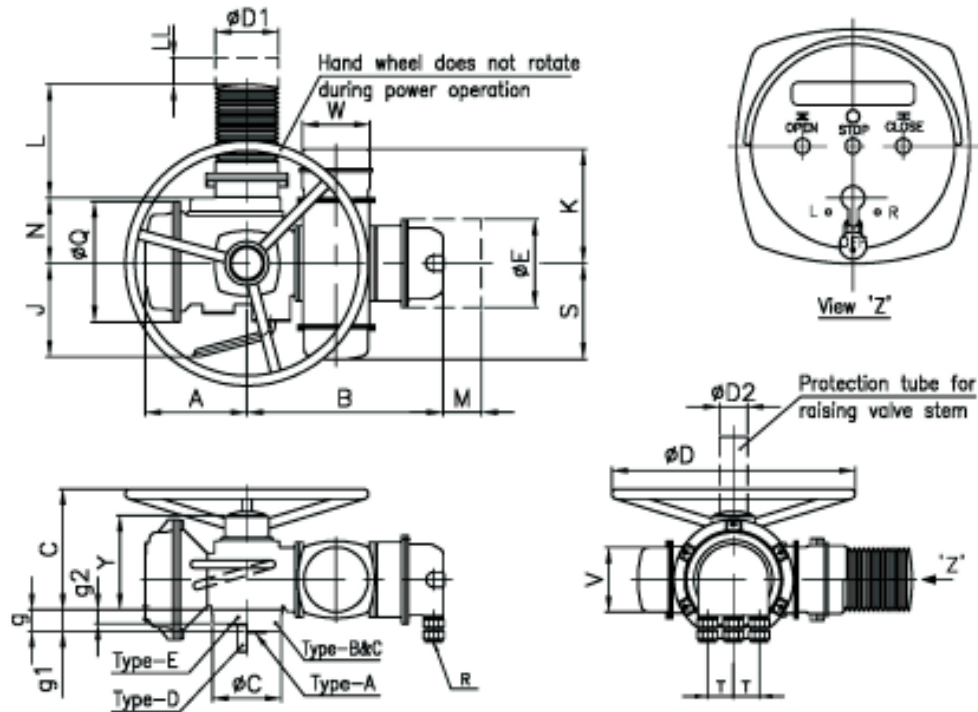
We reserve the right to alter data, dimensions and weights according to improvement made.  
Figures and diagrams are not binding.

(all dimensions are in mm)

**auma®**

## Explosion proof compact actuator (With Plug in Type Customer Terminals)

SACEx3 – SACEx100  
SARCEx6 – SARCEx100



Dimensions	SACEx3 & SACEx6 SARCEx6	SACEx12 & SACEx15 SARCEx12 & SARCEx15	SACEx25 & SACEx30 SARCEx25 & SARCEx30	SACEx50 & SACEx60 SARCEx50 & SARCEx60	SACEx100 SARCEx100
A	226	226	260	260	287
B	548	548	498	498	524
C	240	240	293	293	376
ØD	250	250	360	640	800
ØD1	110 – 125	110 – 125	110 – 160	125 – 160	125 – 200
ØD2	42 x 3.3	60 x 3.7	76 x 3.7	76 x 3.7	89 x 4.1
ØE	230	230	230	230	230
F	185	185	185	185	185
J	185	185	225	225	240
K	348	348	348	348	348
L max.	223	223	300	325	331
LL min.	35	35	45	45	60
M min.	140	140	140	140	140
N	110	110	122	122	206
ØQ	215	215	305	305	305
R (Cable Gland Thread)	2 Nos M32x1.5 1 No. M25x1.5	2 Nos M32x1.5 1 No. M25x1.5	2 Nos M32x1.5 1 No. M25x1.5	2 Nos M32x1.5 1 No. M25x1.5	2 Nos M32x1.5 1 No. M25x1.5
S	227	227	227	227	227
T	58	58	58	58	58
V	185	185	185	185	185
W	185	185	185	185	185
Y	208	208	256	256	276
Ød	125	125	175	175	210
g (TYPE- A)	35 / 73	37 / 67	51 / 95	51 / 95	69 / 119
g1 (TYPE- B & C)	50	50	65	65	80
g2 (TYPE- D & E)	15	15	22	22	30
DIN 3210 Designation	G0	G0	G½	G½	G3

We reserve the right to alter data, dimensions and weights according to improvement made.  
Figures and diagrams are not binding.

(all dimensions are in mm)

**auma®**

## Output drives according to DIN 3210

SA(C)Ex3 – SA(C)Ex100  
SAR(C)Ex6 – SAR(C)Ex100

TYPE-A Stem nut		Dimensions (in mm)		SA(C)Ex3/SA(C)Ex6	SAR(C)Ex6	SA(C)Ex12/SA(C)Ex15	SAR(C)Ex12/SAR(C)Ex15	SA(C)Ex25/SA(C)Ex30	SAR(C)Ex25/SAR(C)Ex30	SA(C)Ex50/SA(C)Ex60	SAR(C)Ex50/SAR(C)Ex60	SA(C)Ex100/SAR(C)Ex100
		DIN 3210	G0	G0	G 1/2	G 1/2	G3					
		F max. kN	25/40	40	60	120	160	190				
		ød1	125	125	175	175	210					
		ød2 f8	60	60	100	100	130					
		ød3	M 10	M 10	M 16	M 16	M 20					
		ød4	28	40	55	55	70					
		ød5 max.	26	38	52	52	65					
		g	35	73	37	67	51	95	51	95	69	119
		h1	3	3	4	4	5					
		h2	15	15	22	22	30					
		øk	102	102	140	140	165					
		L1	1	1	2	2	3					
		L2	30	67	37	67	51	95	51	95	70	120
		Z	4	4	4	4	4					
		Weight kg	1.7	3.9	2	4.2	6	12	6	12	12	28
		b1 JS9	12	12	18	18	22					
		ød4	28	40	55	55	70					
		ød5	26	38	52	52	65					
		ød6 H8	42	42	60	60	80					
		g1	50	50	65	65	80					
		h1	3	3	4	4	4					
		L3	45	45	65	65	80					
		t1	45.3	45.3	64.4	64.4	85.4					
		Weight kg	1.7	2	6	6	12					
				b2 H11	14	14	20	20	24			
				ød4	28	40	55	55	70			
				ød5 DIN:3210	28	28	38	38	47			
				ød5 max.	26	38	52	52	65			
				ød7	50	50	75	75	100			
g1	50			50	65	65	80					
h1	3			3	4	4	4					
h3	10			10	12	12	15					
Weight kg	1.7			2	6	6	12					
				b3 h9	6	6	8	8	12			
				ød8 g6	20	20	30	30	40			
				øg2	15	15	22	22	30			
				L4	50	50	70	70	90			
				L5	55	55	76	76	96			
		t2	22.5	22.5	33	33	43					
		Weight kg	1	1.5	3.5	3.5	6					
				b4 JS9	6	6	8	8	12			
				ød9 H8 DIN3210	20	20	30	30	40			
				ød9 max.	20	32	45	45	60			
				g2	15	15	22	22	30			
				h1	3	3	4	4	4			
				L6	55	56	77	77	100			
				t3	22.8	22.8	33.3	33.3	43.3			
Weight kg	1			1.5	3.5	3.5	6					