

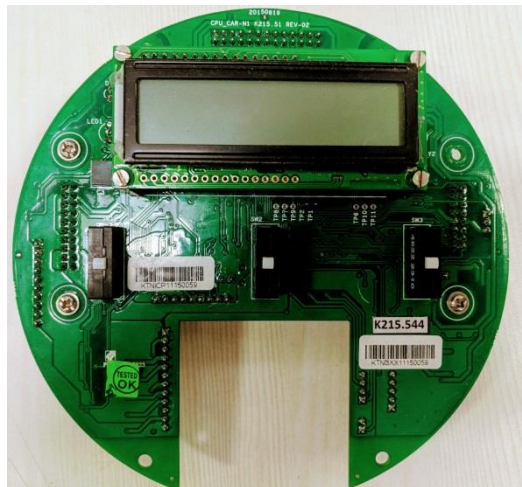


Epac

Spare Parts List

VERSION: V3.XMP

(For Regulating Duty & Modbus Application)



Contents

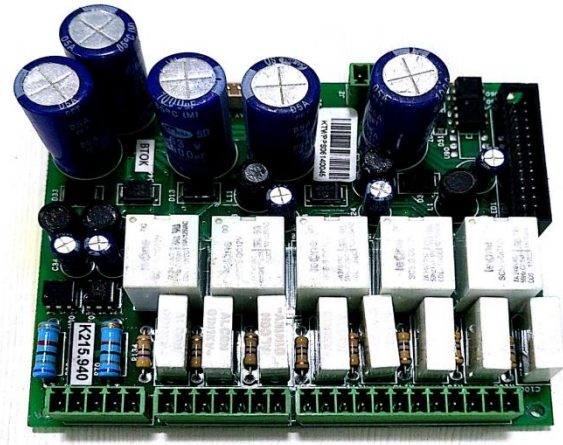
1. IDENTIFICATION OF SPARE PARTS	3
2. LISTOFSPARES-3.XMPMODULE	8

auma®
Solutions for a world in motion

1. IDENTIFICATION OF SPARE PARTS



1



2, 3, 4

CPU CARD ASSEMBLED –VERSION 2.0

PS CARD



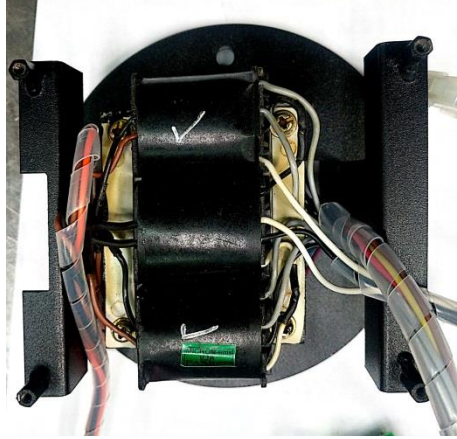
5

IF CARD



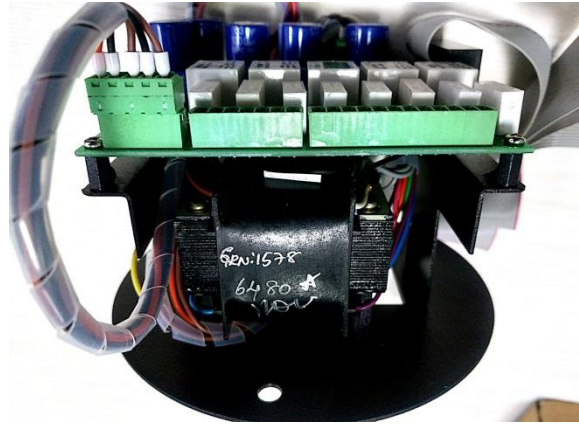
6

TERMINAL CARD ASSEMBLED



14, 15

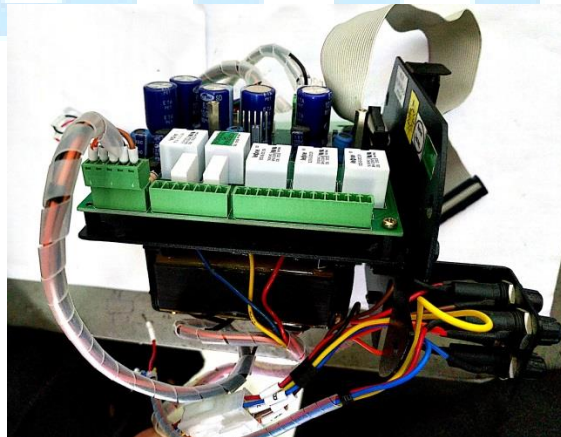
TRANSFORMER



10, 11

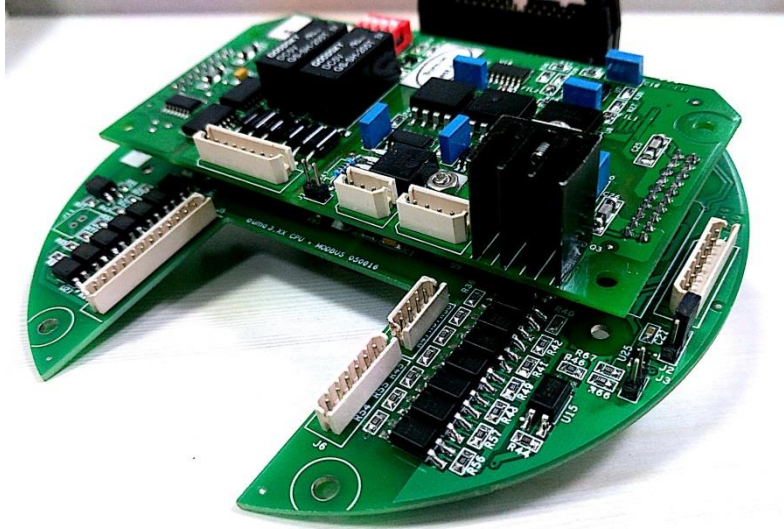
EX. PROOF POWER MODULE

auuma®
Solutions *motion*



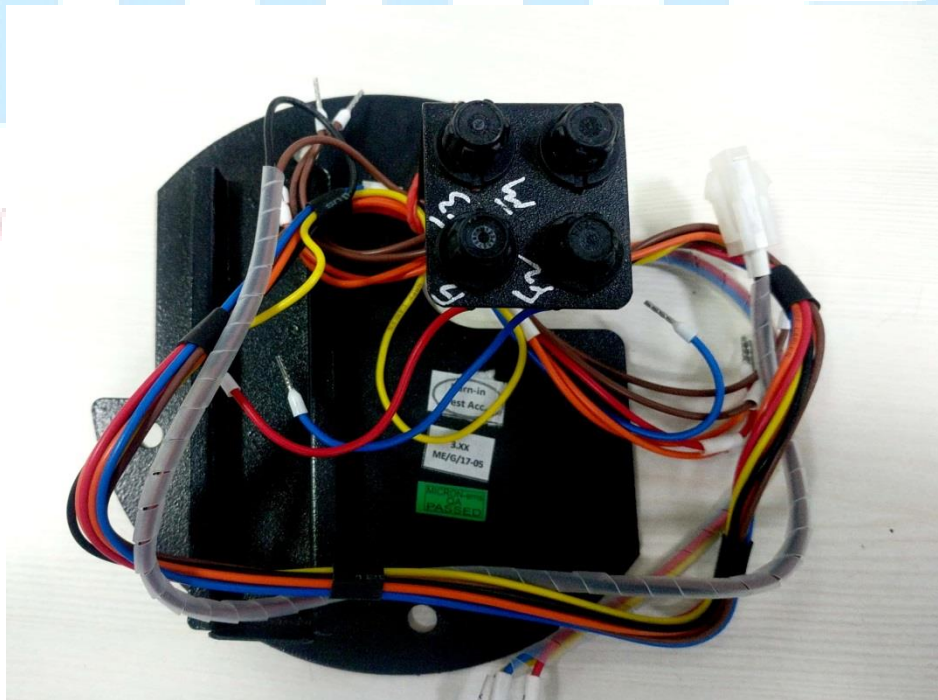
8

WEATHER PROOF POWER MODULE-415/C
[TRANSFORMER+PS WITH MOUNTING PLATE+FUSE ASSEMBLY]



7

WEATHER/EXPLOSION PROOF CONTROL MODULE



19

EXPLOSION PROOF FUSE ASSEMBLY

16



3.XMP EXP CABLE SET

17



3.XMP WP CABLE SET

2. LIST OF SPARES-3.XMP MODULE

WEATHER PROOF MODULE SPARES:

CATEGORY	SL. NO.	SPARE PART DESCRIPTION	REMARKS
PCB	1	CPU CARD ASSEMBLED –VERSION 2.0	REPLACES VERSION 1.0 CPU CARD
	2	PS CARD ASSEMBLED	
	3	24VDC PS CARD ASSEMBLED	
	4	220VDC PS CARD ASSEMBLED	
	5	3.XMP NEW IF CARD PCB ASSEMBLED-REV02	REPLACES EXISTING I.F CARD FOR LOOP & LINE TOPOLOGY
	6	TERMINAL CARD ASSEMBLED	
ASSEMBLIES	7	CONTROL MODULE ASSEMBLY -3.XMP [CPU CARD (VER 2.0) + NEW IF CARD]	
	8	WEATHER PROOF POWER MODULE-415/C [TRANSFORMER+PS WITH MOUNTING PLATE+FUSE ASSEMBLY]	
	9	WEATHER PROOF POWER MODULE-415/D [TRANSFORMER+PS WITH MOUNTING PLATE+FUSE ASSEMBLY]	
	12	WP 3.XMP COMPLETE MODULE (CONTROL + POWER MODULES)	
TRANSFORMERS	14	TRANSFORMER WITH CONNECTOR [415/400V,C(110V)]	
	15	TRANSFORMER WITH CONNECTOR [415/400V,D(230V)]	
CABLE SET	16	CABLE SET FOR WP – 3.XMP (LCD) EPAC MODULE (COMPLETE SET)	STANDARD 415VAC

NOTE: PLEASE CONTACT R & D FOR ADDITIONAL (NON-STANDARD) SPARE PARTS

EXPLOSION PROOF MODULE SPARES:

CATEGORY	SL. NO.	SPARE PART DESCRIPTION	REMARKS
PCB	1	CPU CARD ASSEMBLED –VERSION 2.0	REPLACES VERSION 1.0 CPU CARD
	2	PS CARD ASSEMBLED	
	3	24VDC PS CARD ASSEMBLED	
	4	220VDC PS CARD ASSEMBLED	
	5	3.XMP NEW IF CARD PCB ASSEMBLED-REV02	REPLACES EXISTING I.F CARD FOR LOOP & LINE TOPOLOGY
	6	TERMINAL CARD ASSEMBLED	
ASSEMBLIES	7	CONTROL MODULE ASSEMBLY -3.XMP [CPU CARD (VER 2.0) + NEW IF CARD]	
	10	EXPLOSION PROOF POWER MODULE-415/D [TRANSFORMER+PS CARD WITH MOUNTING PLATE]	
	11	EXPLOSION PROOF POWER MODULE-415/C [TRANSFORMER+PS CARD WITH MOUNTING PLATE]	
TRANSFORMERS	13	EXP 3.XMP COMPLETE MODULE (CONTROL + POWER MODULES)	
	14	TRANSFORMER WITH CONNECTOR [415/400V,C(110V)]	
	15	TRANSFORMER WITH CONNECTOR [415/400V,D(230V)]	
	17	CABLE SET FOR EXP – 3.XMP (LCD) EPAC MODULE [EXP-SCREW TYPE CONNECTION]	STANDARD 415VAC
FUZE ASSEMBLY	18	CABLE SET FOR EXP-3.XMP (LCD) EPAC MODULE [EXP-50 TYPE CONNECTION]	STANDARD 415VAC
	19	EXP PROOF CONTACTOR AND FUZE PLATE (with cables)	

NOTE: PLEASE CONTACT R & D FOR ADDITIONAL (NON-STANDARD) SPARE PARTS