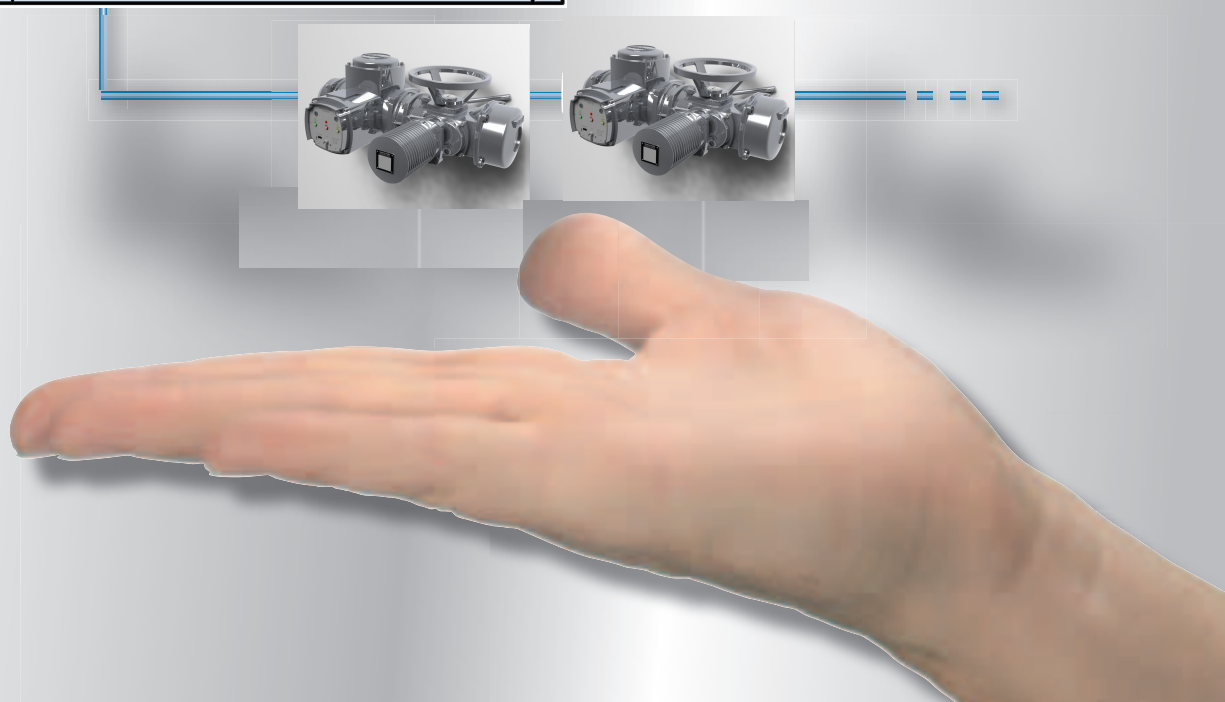
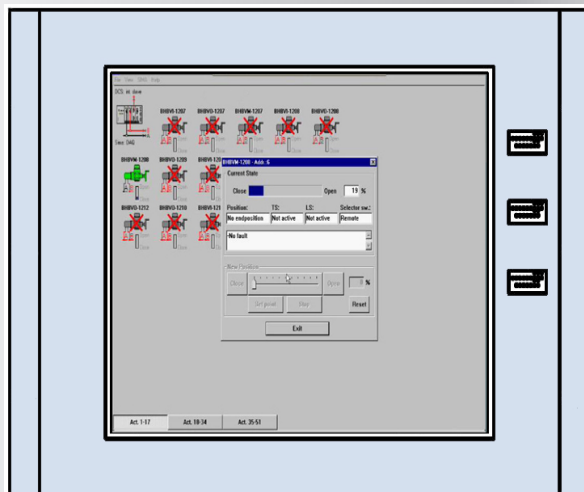


AIMS Master Station

Valve automation as a single source solution



Today, process automation requires dual knowledge: On the one hand, special knowledge to allow development and manufacture of individual components with clearly defined interfaces towards the connected hardware, and on the other hand comprehensive knowledge to understand the process requirements and to conceive a fully operational automation architecture.

AUMA India has the expertise to manufacture actuators; furthermore, AUMA knows how to integrate actuators into an automation environment.

For this, the AIMS Master Station is a significant part.

AIMS as commissioning support system

An actuator network connected to the AIMS Master Station can be commissioned autonomously from the DCS. Device and communication parameter settings can be performed and tested prior to the AIMS network taking up the communication with the DCS.

AIMS as network manager

The AIMS organises the communication with the field devices. The control unit supervises the connection to the signal paths, available as redundant systems, and automatically switches to the secondary channel if required.

AIMS as data concentrator

In comparison to the past, modern process automation systems produce a multitude of feedback signals. It is essential to make good use of this information. Upon request all required data regarding the actuators connected is accessible via the AIMS; it exclusively transmits the signals to the DCS, necessary for orderly operation. This way, the DCS and the users have less involvement.

AIMS as diagnostic tool

Detailed diagnostic and fault signals regarding the actuators connected are accessible via AIMS. In case of failure, the cause can be quickly identified.

Open system

The AIMS works with open fieldbus protocols such as Profibus DP or Modbus RTU. For this reason, the system is available to other fieldbus systems and consequently non-proprietary.

Easy operation

AIMS is based on easy GUI based interface. Operation corresponds to the commonly known patterns.

Efficient integration of actuators into the DCS

AUMA India as system integrator

No system user is keen to specify each field device or each control system component. The operator wants a solution for his automation task. These tasks become more and more complex, due to the increased possibilities.

AUMA is not merely limited to the knowledge of how to manufacture actuators but also possesses the required expertise for integrating devices into the DCS.

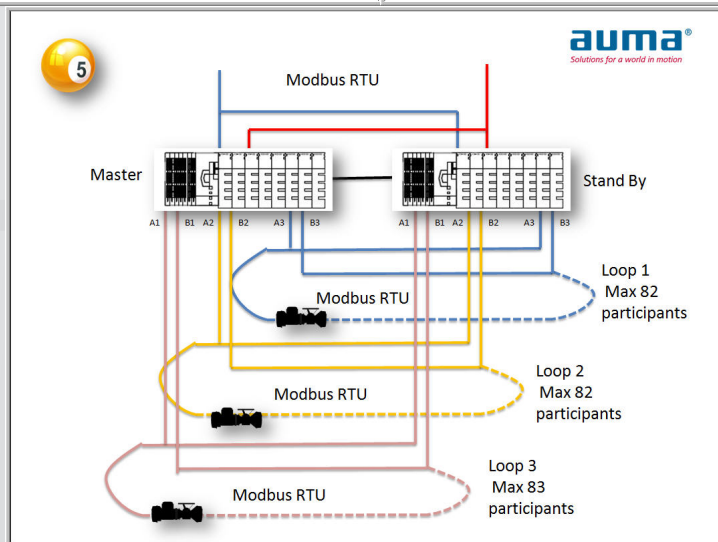
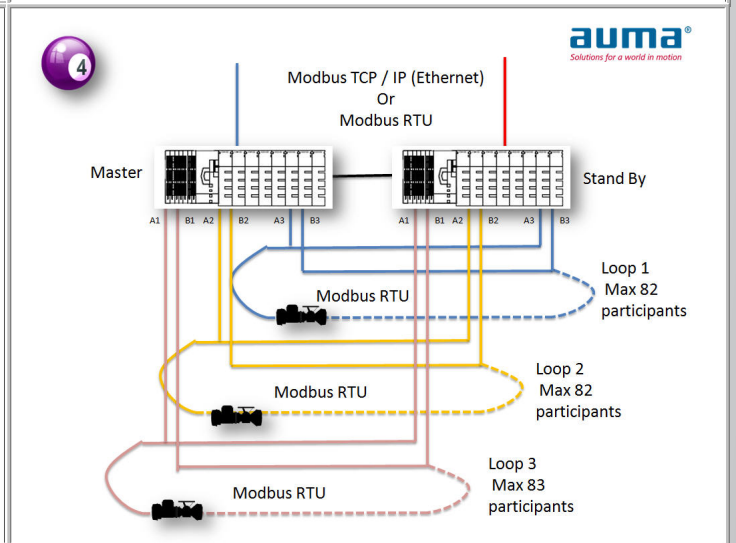
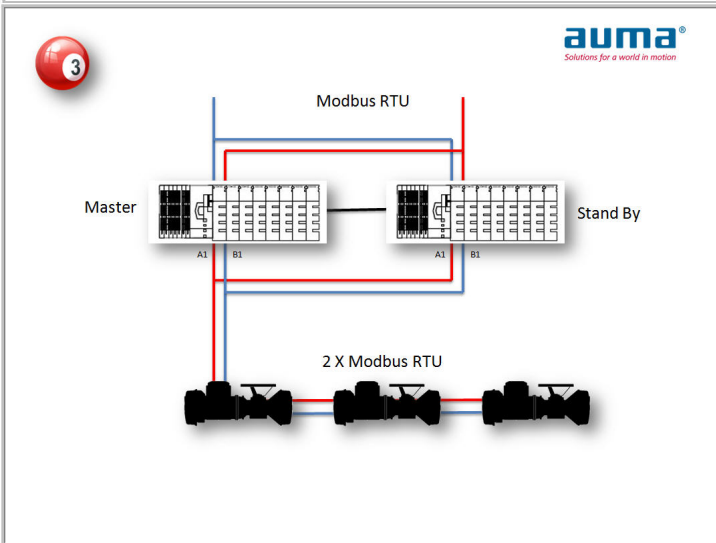
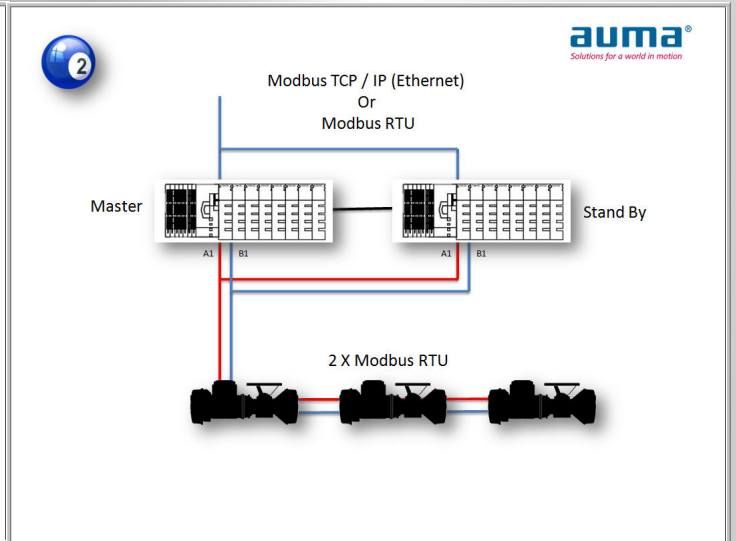
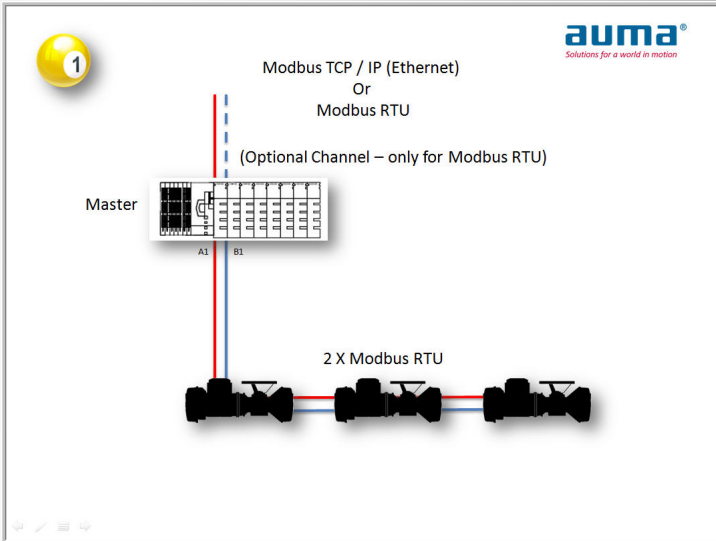
AUMA services include planning support of the peripheral control system in combination with the actuators, the procurement and installation of all required components as well as their commissioning.

Network structures with the AIMS Master Station

There is not a typical process technology system with a typical DCS structure. DCS infrastructure depends on a multitude of aspects: the type of system, structure and enhancement levels grown over the years, different safety-relevant basic conditions, distances to be covered between devices. Also the demands on system availability can be completely different. This list is far from being absolute.

Thus, the AIMS Master Station has a modular design and can be adapted to most conditions whilst using an identical user interface.

In addition to the simple line topology, a multitude of structures are possible.



Typical control schemes with redundancies are shown here

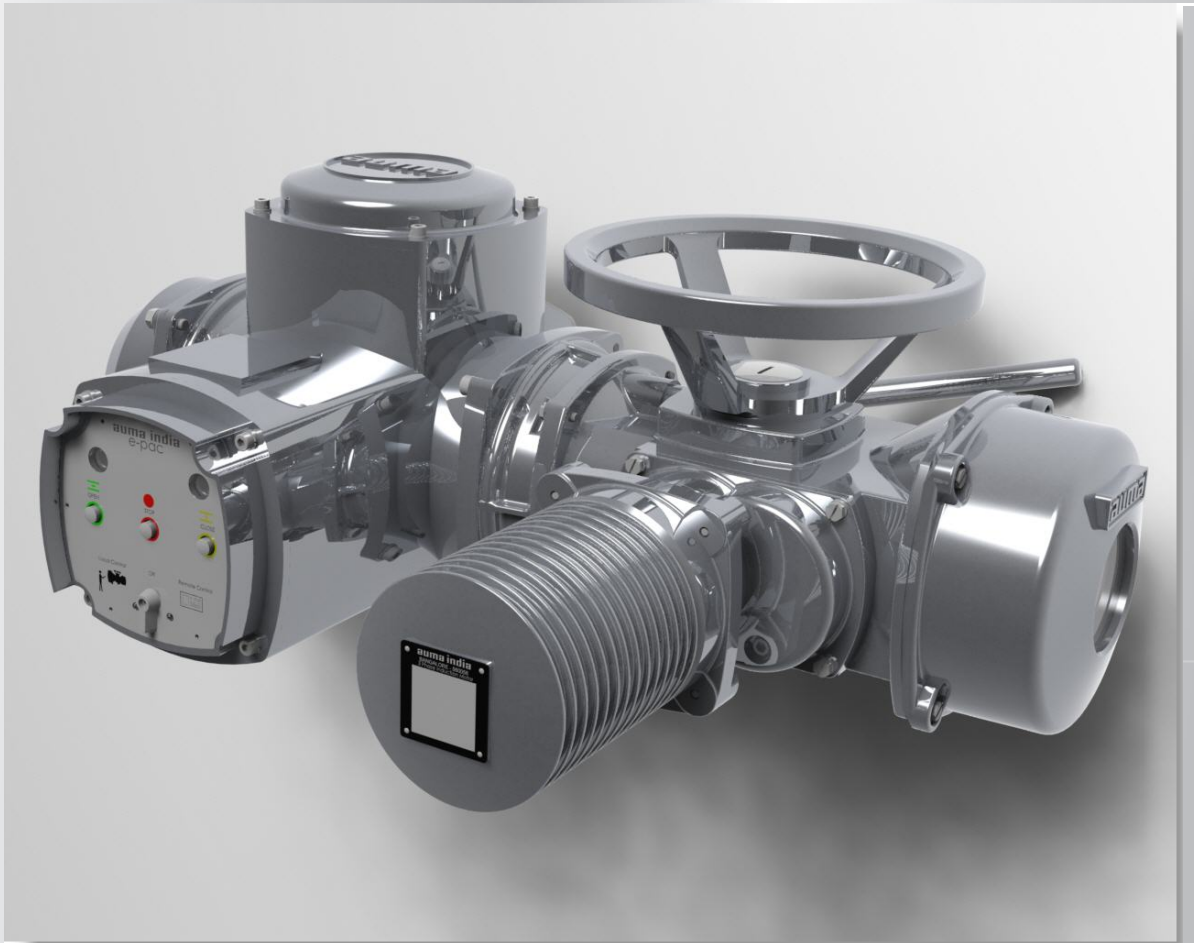
auma®

AUMA (INDIA) PRIVATE LIMITED

39 B II Phase
Peenya Industrial Area
Bangalore - 560 058

Tel +91 80 2839 4656 / 3928 0000
Fax +91 80 2839 2809
info@auma.co.in
www.auma.co.in

For detailed information about AUMA INDIA products, refer to the Internet:
www.auma.co.in



Certificate Registration No.
44 100 950262-E3

Subject to change without notice. The product features and technical data provided do not express or imply any warranty.