

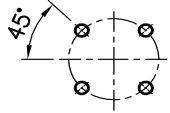
Dimension Data sheet for Part-turn Worm Gearboxes

DIMENSIONS WORM GEARBOX - FLANGE MOUNTED

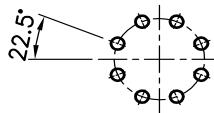
GS160–GS250

Mounting flange for multi turn actuator EN ISO 5210

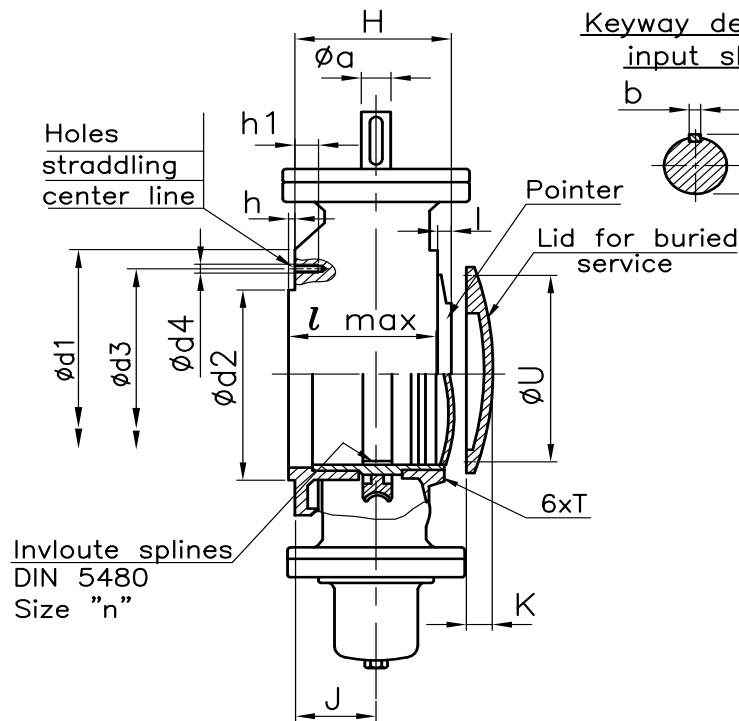
For Electrical operation



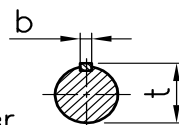
For F14/F16



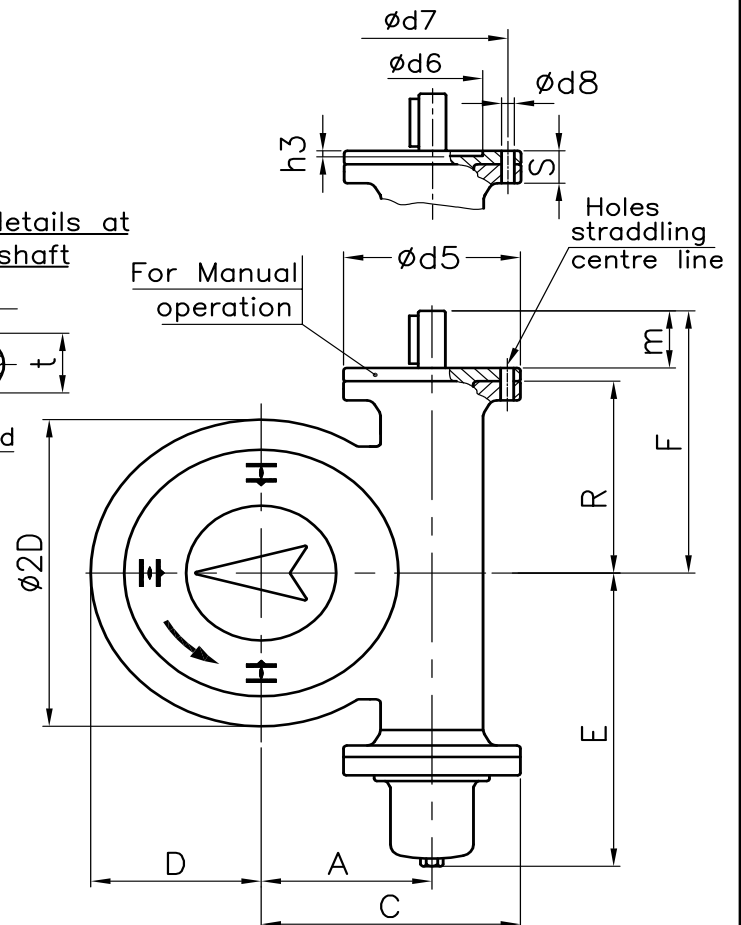
For F25/F30



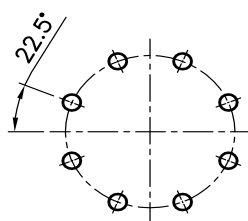
Keyway details at input shaft



For Manual operation

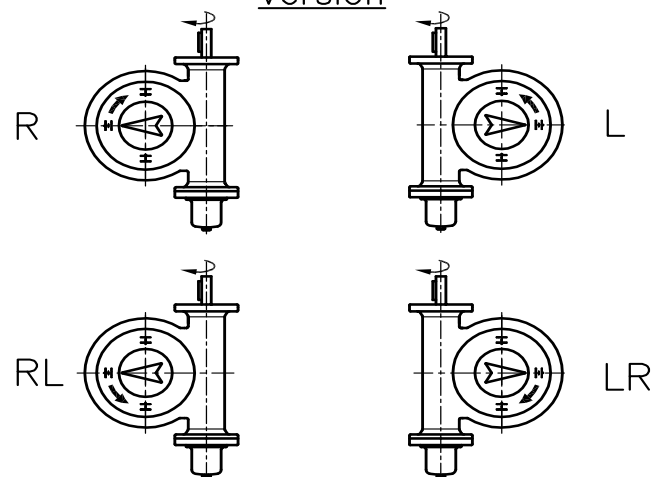


Mounting flange for valve EN ISO 5211

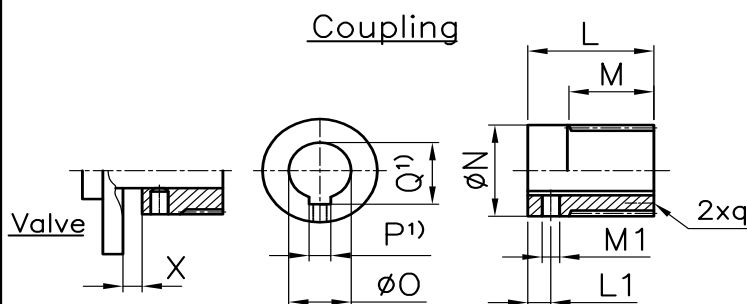


For F25/F30/F35/F40

Version



Description of the 4 different versions
(With view on pointer cover)



1) According to IS:2048 at
max.dia "O"

Code	Direction of rotation at input shaft	Direction of rotation at output drive	Position of the worm shaft
LR	Clockwise	Clockwise	Left side
RL	Clockwise	Anti-clockwise	Right side
L	Clockwise	Anti-clockwise	Left side
R	Clockwise	Clockwise	Right side

Dimension Data sheet for Part-turn Worm Gearboxes

DIMENSIONS WORM GEARBOX - FLANGE MOUNTED					GS 160 - GS 250	
Dimensions	GS 160		GS 200		GS 250	
EN ISO 5211	F25	F30	F30	F35	F35	F40
A	160		200		250	
C	248		305		400	
D	173		215		268	
E	340		400		490	
F	260		340		420	
H	165	194	210	249	266	
I	25		27		35	
J	76	105	101	140	134	
K	20		25		30	
L	110	138	140	180	180	
M	70	70	94	94	105	
L1	20		20		20	
M1	M10		M12		M16	
Ø N	149.2		189		209	
Ø O max	100		125		160	
Ø O - Pilot bore	40		50		60	
p ¹⁾	28		32		40	
Q ¹⁾	106.4		132.4		169.4	
R	200		260		320	
S	25		33		37	
T	M6 X 10		M8 X 15		M10 X 15	
Ø U PCD	185		230		260	
X min	0		0		0	
X max	12		22		22	
Øa g6	30		40		50	
b	8		12		14	
Ø d1	300	345	350	415	415	475
Ø d2 f8	200	230	230	260	260	300
Ø d3	254	298	298	356	356	406
Ø d4	M16	M20	M20	M30	M30	M36
Ø d5	175		210		300	
Ø d6 H8	100		-		-	
Ø d7	140		-		-	
Ø d8	18		22		18	
h	5	5	5	5	5	7
h1	25	30	30	40	40	50
h3	10		-		-	
l - max	120	149	160	199	200	
m	50		67		85	
DIN 5480 'n'	150 x 3 x 48		190 x 5 x 36		210 x 5 x 40	
q	M6 X 10		M8 X 13		M10 X 18	
t	33		43		53.5	

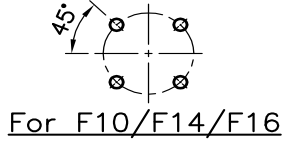
We reserve the right to alter data according to improvements made. Previous documents become invalid with the issue of this document.

Dimension Data sheet for Part-turn Worm Gearboxes

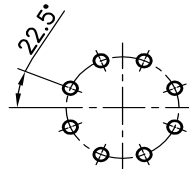
DIMENSIONS WORM GEARBOX - FLANGE MOUNTED

GS160–GS250
with
GZ14–GZ25

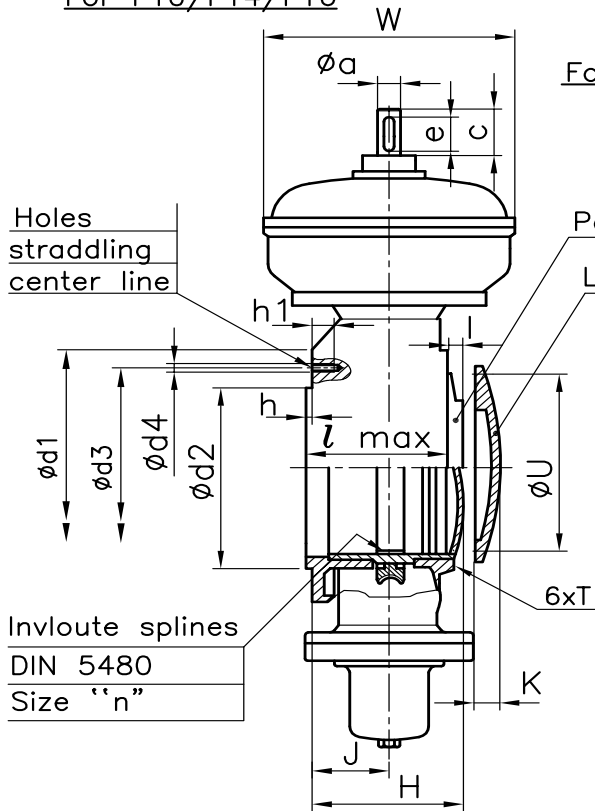
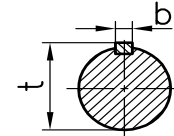
Mounting flange for multi turn actuator EN ISO 5210



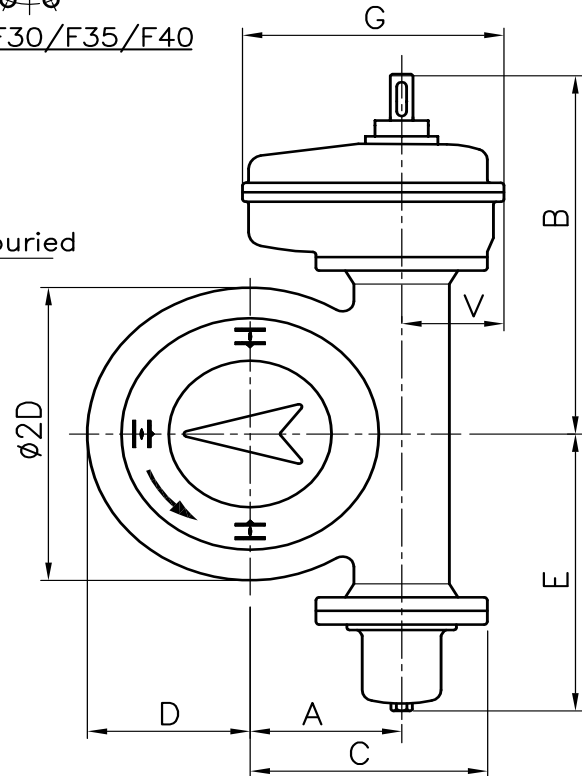
Mounting flange for valve EN ISO 5211



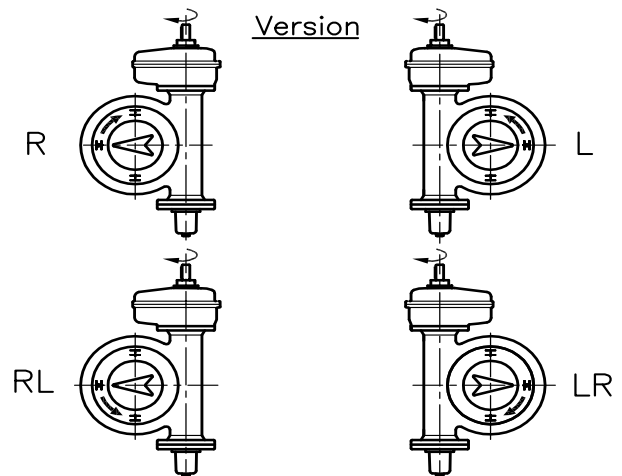
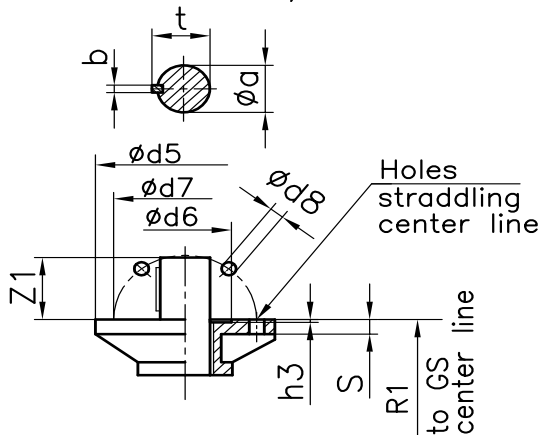
Keyway details at input shaft



For F25/F30/F35/F40



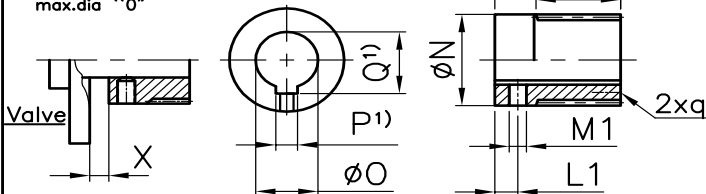
Mounting flange for multi turn actuator EN ISO 5210/DIN 3210



Description of the 4 different versions (With view on pointer cover)

Coupling

1) According to IS:2048 at max. dia "o"



Code	Direction of rotation at input shaft	Direction of rotation at output drive	Position of the worm shaft
LR	Clockwise	Clockwise	Left side
RL	Clockwise	Anti-clockwise	Right side
L	Clockwise	Anti-clockwise	Left side
R	Clockwise	Clockwise	Right side

Dimension Data sheet for Part-turn Worm Gearboxes

DIMENSIONS WORM GEARBOX - FLANGE MOUNTED											GS 160/GZ 14 - GS 250/GZ 25					
Dimensions	GS 160/GZ 14				GS 200/GZ 16						GS 250/GZ 25					
GZ Ratio (i)	4:1		8:1		4:1		8:1		16:1		4:1		8:1		16:1	
EN ISO 5210	F14		F10		F14		F14		F10		F16		F14		F14	
DIN 3210	G½		G0		G½		G½		G0		G3		G½		G½	
EN ISO 5211	F25	F30	F25	F30	F30	F35	F30	F35	F30	F35	F35	F40	F35	F40	F35	F40
A	160				200						250					
B	465 (445)		445		545		545 (525)		525		647 (627)		627		627 (607)	
C	248				305						400					
D	173				215						268					
E	340				400						490					
G	294				324						324					
H	165	194	165	194	210	249	210	249	210	249	266					
I	25				27						35					
J	76	105	76	105	101	140	101	140	101	140	134					
K	20				25						30					
L	110	138	110	138	140	180	140	180	140	180	180					
M	70				94						105					
Ø N	149.2				189						209					
L1	20				20						20					
M1	M10				M12						M16					
Ø O max	100				125						160					
Ø O Pilot bore	40				50						60					
P ¹⁾	28				32						40					
Q ¹⁾	106.4				132.4						169.4					
R1	405				485						567					
T	M6 X 10				M8 X 15						M10 X 15					
Ø U PCD	185				230						260					
V	100				115						115					
W	200				230						230					
X min - max	0 - 12				0 - 22						0 - 22					
Øa g6	30 / (20)		20		30		30 / (20)		20		40 / (30)		30		30 / (20)	
c	60 / (43)		43		60		60 / (43)		43		73 / (60)		60		60 / (43)	
Ø d1	300	345	300	345	350	415	350	415	350	415	415	475	415	475	415	475
Ø d2 f8	200	230	200	230	230	260	230	260	230	260	260	300	260	300	260	300
Ø d3	254	298	254	298	298	356	298	356	298	356	356	406	356	406	356	406
Ø d4	M16	M20	M16	M20	M20	M30	M20	M30	M20	M30	M30	M36	M30	M36	M30	M36
e	55 / (38)		38		55		55 / (38)		38		65 / (55)		55		55 / (38)	
h	5	5	5	5	5	5	5	5	5	5	5	7	5	7	5	7
h1	25	30	25	30	30	40	30	40	30	40	40	50	40	50	40	50
l max	120	149	120	149	160	199	160	199	160	199	200					
DIN 5480 'n'	150 X 3 X 48				190 X 5 X 36						210 X 5 X 40					
q	M6 X 10				M8 X 13						M10 X 18					
Mounting flanges for multi-turn actuator																
EN ISO 5210	DIN 3210	Øa g6	b	Ød5	Ød6 H8	Ød7	Ød8	h3	z1	t	s	Weight				
												kg	lbs			
F10	-	20	6	125	70	102	11	4	40	22.5	12	1	2.2			
-	G0	20	6	125	60	102	11	4	40	22.5	12	1	2.2			
F14	G½	30	8	175	100	140	18	5	60	33	17	2.3	5			
F16	G3	40	12	210	130	165	22	6	80	43	25	5	11			

We reserve the right to alter data according to improvements made. Previous documents become invalid with the issue of this document.