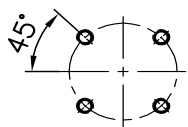


# Dimension sheet for Part-turn Worm Gearboxes

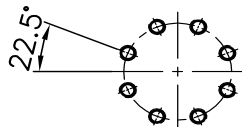
## DIMENSIONS PART-TURN WORM GEARBOX - FLANGE MOUNTED

GS 40.2 - GS 125.2/VZ 4

### Mounting flange for valve ISO 5211

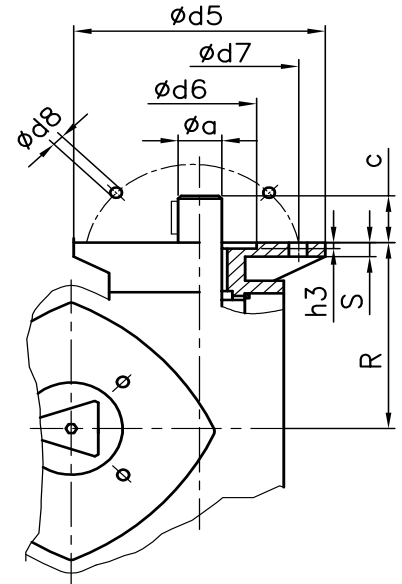


For F07/F10/F12/F14/F16

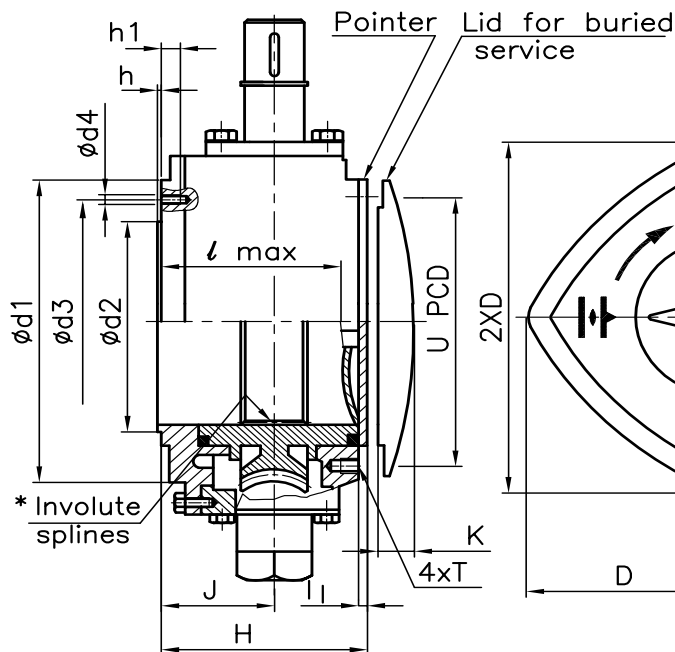


For F25

### Mounting flange for multi-turn actuator ISO 5210/DIN3210



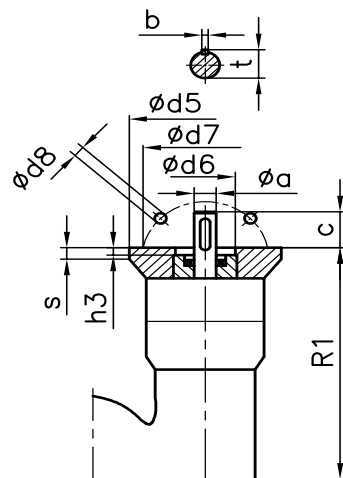
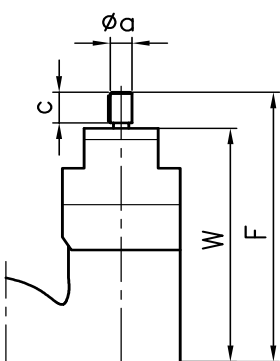
Dimension E1 for adjustable travel



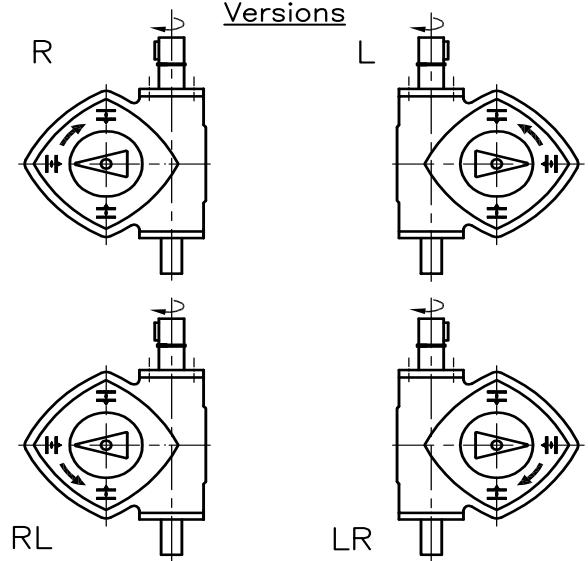
### WORM GEAR BOX WITH REDUCTION UNIT (GS with VZ4)

For Electrical operation

For manual operation

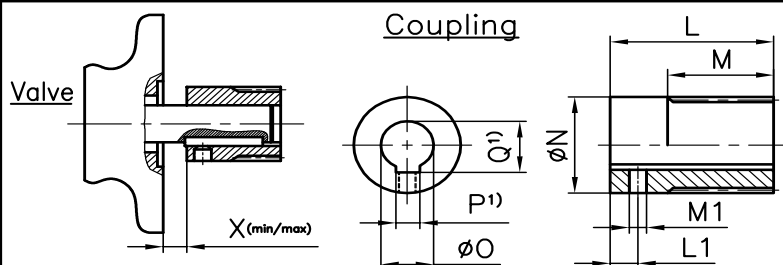


### Versions



Description of the 4 different versions  
(With view on pointer cover)

Code	Direction of rotation at input shaft	Direction of rotation at output drive	Position of the worm shaft
LR	Clockwise	Clockwise	Left side
RL	Clockwise	Anti-clockwise	Right side
L	Clockwise	Anti-clockwise	Left side
R	Clockwise	Clockwise	Right side



1) According to IS:2048 at max. dia "O"

\*On request

# Dimension sheet for Part-turn Gearboxes

DIMENSIONS WORM GEARBOX - FLANGE MOUNTED											GS 40.2 - GS 125.2/VZ 4			
Dimensions	GS 40.2		GS 63.2		GS 80.2		GS 100.2		GS 100.2 + VZ 4		GS 125.2		GS 125.2 + VZ 4	
EN ISO 5211	F07	F10	F10	F12	F12	F14	F14	F16	F14	F16	F16	F25	F16	F25
A	40		63		80		100		100		125		125	
B1	72		85		92		127		127		138		138	
B2	72		85		92		118		118		128		128	
C	73		96		113		149		149		174		174	
D	56		77		95		113		113		143		143	
E	113		127		133		185		185		195		195	
E1	120		147		156		220		220		230		230	
F	145		159		165		223		262		234		274	
H	89	97	100	116	124	144	150	176	150	176	163	173	163	173
I	4		4		4		5		5		5		5	
J	50	58	56	72	70	90	84	110	84	110	93	103	93	103
K	13		15		16		16		16		18		18	
L	40	51	65	81	75	95	90	116	90	116	105	115	105	115
L1	8		12		12		15		15		15		15	
M	20		35		40		53		53		65		65	
M1	M4		M6		M6		M8		M8		M8		M8	
∅ N	41.8		51.8		67.6		81.6		81.6		105.8		105.8	
∅ O max	25		36		48		60		60		80		80	
∅ O Pilot bore	15		20		25		25		25		30		30	
p <sup>1)</sup>	8		10		14		18		18		22		22	
Q <sup>1)</sup>	28.3		39.3		51.8		64.4		64.4		85.4		85.4	
R	105		118		125		163		-		174		-	
R1	-		-		-		-		222		-		234	
T	M5		M6		M6		M6		M6		M6		M6	
U PCD	70		90		110		125		125		150		150	
W	-		-		-		-		218		-		228	
X max	5	8	10	10	20	20	20	20	20	20	30	30	30	30
X min	0	0	0	0	0	0	0	0	0	0	0	0	0	0
∅a f7	20		20		20		30		20		30		20	
b	6		6		6		8		6		8		6	
c	40		40		40		60		40		60		40	
∅ d1	90	125	125	150	150	175	175	210	175	210	210	300	210	300
∅ d2 f8	55	70	70	85	85	100	100	130	100	130	130	200	130	200
∅ d3	70	102	102	125	125	140	140	165	140	165	165	254	165	254
∅ d4	M8	M10	M10	M12	M12	M16	M16	M20	M16	M20	M20	M16	M20	M16
h	3	3	3	3	3	3	3	3	3	3	3	5	3	5
h1	15	17	15	18	18	24	24	30	24	30	30	24	30	24
I - max	75	86	85	101	105	125	130	156	130	156	140	150	140	150
t	22.5		22.5		22.5		33		22.5		33		22.5	
Mounting flange for multi-turn actuator	ISO 5210				F07		F10		-		F14			
	DIN 3210				-		-		G0		G½			
	∅ d5		90		125		125		175					
	∅ d6 H8		55		70		60		100					
	∅ d7		70		102		102		140					
	∅ d8		9		11		11		18					
	h3		4		5		5		5					
S		8		10		10		17						

We reserve the right to alter data according to improvements made. Previous documents become invalid with the issue of this document.