

BEVEL GEARBOX- Manual Operation										ABG10.2 - ABG35.2													
Gear Box type	Mounting Flange	Dimension									Ød	b	t	G	E	ØO	h1	h2	M	L	N	U	V
		Ød1	Ød2	Ød3	Ød4	Ød5		Ød6	Ød7														
						Min	Max																
ABG10.2	F14	100	140	175	M16	10	40	G2"	60x3.7	20	6	22.5	154	89	-	4	24	44	131	129	60	8	
ABG14.2	F14*	100	140	175	M16	20	50	G2 1/2"	76x3.7	30	8	33	161	94	M8	4	24	58	192	140	62	9	
	F16	130	165	210	M20											5	30						
ABG16.2	F16*	130	165	210	M20	30	60	G3"	89x3.7	30	8	33	174	96	M12	5	30	65	250	190	70	9	
	F25	200	254	300	M16											24							
ABG25.2	F25*	200	254	300	M16	25	74	G4"	114x3.7	30	8	33	194	110	M12	5	24	64	302	243	90	3	
	F30	230	298	350	M20											30							
ABG30.2	F30*	230	298	350	M20	30	102	G5"	140x4.9	30	8	33	226	129	M16	5	30	67	323	264	113	12	
	F35	260	356	415	M30											45							
ABG35.2	F35	260	356	415	M30	30	110	G5"	140x4.9	40	12	43	230	133	M20	5	45	83	391	314	125	1	

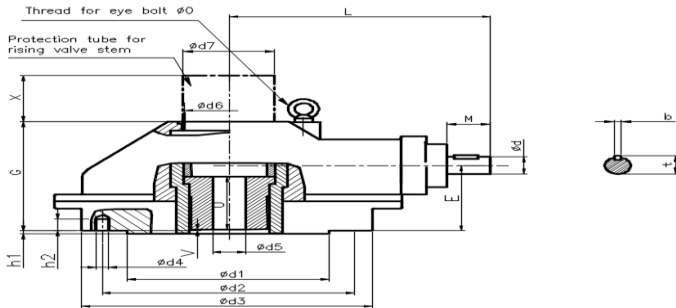
GEARBOX	GZ Type	Ratio	J	Q	Øa	b1	t1	M1	L1
ABG25.2	GZ14	4:1	100	294	30/(20)	8/(6)	33/(22.5)	60/(43)	508/(488)
		8:1			20	6	22.5	43	488
ABG30.2	GZ14	4:1	100	294	30/(20)	8/(6)	33	60/(43)	529/(509)
		8:1			20	6	22.5	43	509
	GZ16	4:1	115	324	30	8	33	60	549
		8:1			30/(20)	8/(6)	33/(22.5)	60/(43)	549/(529)
ABG35.2	GZ16	4:1	115	324	30	8	33	60	599
		8:1			30/(20)	8/(6)	33/(22.5)	60/(43)	599/(579)
	GZ16	16:1	115	324	20	6	22.5	43	579
		16:1			20	6	22.5	43	579

Dimensions of actuator mounting flange								
Actuator Mounting flange	DIN3210	ØD1	ØD2	ØD3	ØD4	R	h3	Z1
	G0	125	102	60	11	12	4	40
	G 1/2	175	140	100	18	17	5	60
	G3	210	165	130	22	25	6	80

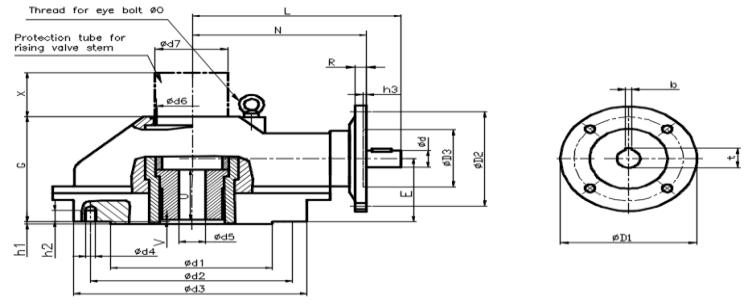
*Optional - Can be provided on request

X - As per requirement

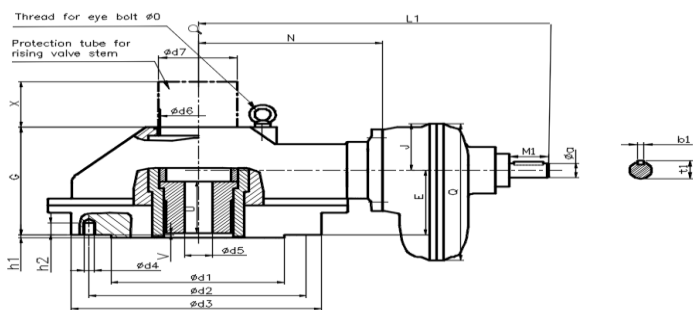
For Manual -ABG Gearbox



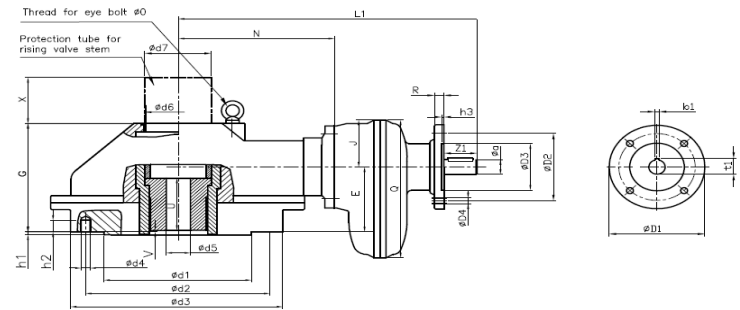
For Electrical -ABG Gearbox + Actuator Mounting Flange



For Manual -ABG Gearbox + GZ



For Electrical -ABG Gearbox +GZ + Actuator Mounting Flange



Note: The option of interchangeability from Electric to manual can be applicable for the range of ABG10.2-ABG35.2 and the change over from manual to electric is applicable for the range of ABG25.2-ABG35.2

We reserve the right to alter data according to improvements made. Previous data sheets become invalid with issue of this data sheet.