

*"Infaumation" Wishes All Readers a Very Happy & Prosperous New Year*

This issue of "Infaumation" provides valuable insights into various projects where Auma India products are being used along with other articles. Once again, Auma India takes this opportunity to wish all its customers a Happy and Successful New Year.

### Auma India Supplies Actuators for Lavasa City Project near Pune



Lavasa is being developed as India's first hill station since Independence. It is located in 25,000 acres of land in the backwaters of the Warasgaon Dam, which is close to two metropolises, Mumbai and Pune. This project is going to be the largest hill station in India, full of natural surroundings with state of the art roads, reputed educational institutions, hospitality, training centers, robust infrastructure, modern amenities and leisure activities like golf, trekking and rappelling. The first phase of the Lavasa hill town is scheduled for completion in June 2009.

### Message from the Marketing Head

Auma India is a market driven company. We believe in working closely with all our customers. We not only endeavor to provide technical solutions to meet customers requirement, but also constantly evaluate whether our endeavors result in total customer satisfaction. This has resulted in a strong customer base and loyalty. We thank all our customers for having reposed their confidence and trust in us.



Balachandra M N

Auma India has supplied more than 40 actuators for various applications like controlling the entire process of the water treatment plant (3.4 MLD) and sewage treatment plant (2.4 MLD) of Phase-I of Lavasa city. Auma India is proud to be associated with this prestigious project.



### Khadakwasla Dam Gate Automation



### Contents

- Auma India Actuators used in:
  - Lavasa City Project near Pune
  - Shahu Sugar Co-generation Plant, Kagal
  - Surat Lignite Power Plant (SLPP), Gujarat
  - Thermal Power Plant Kosti, Sudan
  - Other Projects
- CE Marking for Auma India Products
- Test Rigs for High Torque Actuators
- Auma Actuators- The Modular Concept
- Renovation of Acquired Property Helps in Increased Warehouse Space
- Auma India's Contribution towards Peenya Infrastructure Corridor Upgradation Project (PICUP)



### Shahu Sugar Co-generation Plant, Kagal



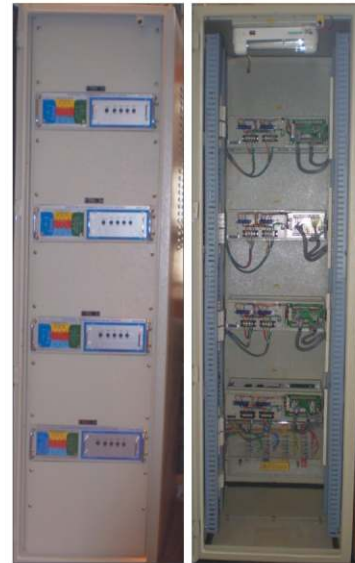
Chhatrapati Shahu Co-operative Sugar Factory Ltd., Kagal (Dist. Kolhapur, Maharashtra) is one of the renowned co-operative sugar factories in Western Maharashtra having 3500 Tons crushing capacity. They have recently installed and commissioned a 12.5 MW Co-generation Power Plant successfully in consultation with M/s. Avant Garde. Auma India has supplied more than 50 actuators for the entire project.

### Surat Lignite Power Plant (SLPP), Gujarat

Auma India has supplied 16 actuators with 4 cabinets, each having four 19" Rack Mountable Thyristor Reversal Unit (TRU) for Surat Lignite Power Plant (SLPP) which is set up by Gujarat Industries Power Company Limited (GIPCL). Auma India has supplied similar actuators in the past to GIPCL.



Individual TRU Units



TRU Cabinets

### Actuators Exported to China

Auma India has recently supplied a batch of actuators to Auma China, which consists of Norm and Epac (Integral Starter type) actuators.



### Thermal Power Plant Kosti, Sudan

Auma India has supplied over 100 actuators with Integral Thyristor Reversal Unit for Kosti Thermal Power Plant in Sudan. The use of Thyristor Reversal Unit as Motor Starter ensures longer life over Electro-mechanical starter. This project is being executed by M/s. BHEL.

## CE Marking for Auma India Products

**auma®**

**Declaration of Conformity**  
according to ISO/IEC 17050

Document No: AIPL/QC&QA/D&D/03/08-09

Issuer's Name: **Auma (India) Pvt. Ltd**  
Issuer's address: Plot No. 39-B, II Phase Peenya Industrial Area Bangalore-58

Declares that, the  
Auma multi-turn actuators of the type range  
SA3-SA100  
SAR3-SAR100  
In versions AUMA NORM & AUMA Epic  
For valve actuation and general actuation application

**Auma (India) Pvt. Ltd** declares herewith, that the above-mentioned electric AUMA multi-turn actuators are in compliance with the following directives:

Directive on Electromagnetic compatibility (EMC) 2004/108/EC  
Low Voltage equipment directive (2006/95/EC)  
Machinery directive (97/37/EC)

The object of the declaration described above is in conformity with the requirement of the following documents:

**a) EMC directive**

1. EN 61000-6-4:2007	Generic standards; Emission standard for industrial environments
2. EN 61000-6-2:2005	Generic standards; Immunity for industrial environments

**b) Low Voltage equipment directive**

1. EN 60034-1:2004	Rotating electrical machines Rating & performance
2. EN 50178:1998	Electronic equipment for use in power installations

**c) Machinery directive**

1. EN 1050-97	Safety of machinery-Principles for risk assessment
2. EN 60204-1: 1998	Safety of machinery-Electrical equipment of machines

AUMA multi-turn actuators covered by this Declaration must not be put into service until the entire equipment, into which they are incorporated, has been declared in conformity with the provisions of the Directive.

Place: Bangalore  
Date: 24/11/08

**auma®**  
Auma (India) Pvt. Ltd  
Plot No. 39-B II Phase  
Peenya Industrial Area  
Bangalore-560058  
India

Arvind K. Goel  
Managing Director

Certificate for Auma India Actuators

**auma®**

**Declaration of Conformity**  
according to ISO/IEC 17050

Document No: AIPL/QC&QA/D&D/01/08-09

Issuer's Name: **Auma (India) Pvt. Ltd**  
Issuer's address: Plot No. 39-B, II Phase Peenya Industrial Area Bangalore-58

declares that, the  
Auma gearbox of the type ranges

**Worm gearboxes** GS 40.2-GS125.2 with/without primary reduction gears VZ  
GS 160-GS 500 with/without primary reduction gears GZ

**Lever gearboxes** GF 63.2-GS125.2 with/without primary reduction gears VZ  
GF 160-GF 315 with/without primary reduction gears GZ

**Bevel gearboxes** GK 10.1- GK40.1

are designed and produced, as actuating devices.

Messrs. AUMA (INDIA) Pvt. Ltd (manufacturer) declares herewith, that when designing the above mentioned AUMA gearboxes the following standards were applied as per the Machinery Directive 98/37/EC

EN ISO 12100-1	Safety of machinery - Basic concepts, general principles for design basic terminology, methodology
+CRGD- 04	Safety of machinery - Basic concepts general principles for design technical principles
EN ISO 12100-2	Safety of machinery - Basic concepts general principles for design technical principles
+CRGD- 04	Industrial Valves-Multi-turn valve actuators attachments
EN ISO 5210	Industrial Valves-part turn-actuators-attachments
+CRGD- 03	Industrial Valves-part turn-actuators-attachments
EN ISO 5211	Industrial Valves-part turn-actuators-attachments
+CRGD- 03	Industrial Valves-part turn-actuators-attachments
DIN EN 1050- 97	Safety of machinery - Principles for risk assessment

AUMA gearboxes covered by this Declaration must not be put into service until the entire machine, into which they are incorporated, has been declared in conformity with the provisions of the Directive

Place: Bangalore  
Date of issue: 14/08/08

**auma®**  
Auma (India) Pvt. Ltd  
Plot No. 39-B II Phase  
Peenya Industrial Area  
Bangalore-560058  
India

Arvind K. Goel  
Managing Director

Certificate for Auma India Gearboxes

Auma India has recently certified its Actuators and Gearboxes as CE marked to indicate conformity with the essential health and safety requirements at the place of use.

## Test Rigs for High Torque Actuators

Auma India has recently installed two new High Torque Actuator test rigs, which use PLC/SCADA. It has significantly increased its capability for routine functional testing of its products as well as lifecycle/endurance testing.



## Auma Actuators- The Modular Concept

Auma offers Plug-in type connections between actuators and integral starters as well for the customer's connections, providing a wide range of benefits to the customers as mentioned below:

- Removal of wires from the customer's connection terminals is avoided during overhauling of actuators, resulting in significant saving of time
- Scalability is achieved using Plug-in type connection, making future upgradation of motor controls easy
- Plug-in type connection helps in resolving problems like vibrations, shocks and high temperatures in a pipeline with ease, by separating and mounting motor controls on a wall
- Modular design reduces the requirement of spares for operation and maintenance to a minimum
- Modularity and easy interchangeability ensures minimum downtime during operation





# inf<sup>a</sup>uma<sup>t</sup>ion

## Renovation of Recently Acquired Property Helps in Increased Warehouse Space

Auma India is renovating its adjoining property in a phased manner to increase its warehouse space. We have started storing finished goods in the newly acquired property, which is helping Auma India to maintain its inventory in a much more efficient way.



## Auma India's Contribution towards Peenya Infrastructure Corridor Upgradation Project (PICUP)

Auma India has contributed towards the development of infrastructure in the Peenya Industrial Area (PIA), which includes development and maintenance of roads, parks & other infrastructure. Auma India has taken the responsibility for the maintenance of the Peenya Green Park that is spread over an area of 3.5 acres (14,163.99 square meter).



## Customer Training Program at Auma (Jan'09)



# auma®

*Solutions for a world in motion.*

Edited by: Sandhya Sengar, Marketing Dept.

## Auma India Pvt. Ltd.

### Head Office and Works:

Auma India Pvt. Ltd.  
39-B, II Phase, Peenya Industrial Area, Bangalore-560058  
E-mail: [info@auma.co.in](mailto:info@auma.co.in)

### Branch Office:

Auma India Pvt. Ltd.  
712, 713, Bldg. No.1  
"Siddharth Towers", Kothrud  
Pune-411038  
E-mail: [aumapune@auma.co.in](mailto:aumapune@auma.co.in)

Auma India Pvt. Ltd.  
8-C, Block B-H, Munirka  
New Delhi-110067  
E-mail: [aumandl@auma.co.in](mailto:aumandl@auma.co.in)