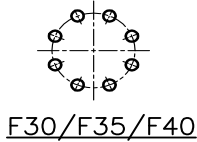


Dimension Data sheet for Part-turn Worm Gearboxes

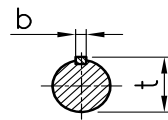
DIMENSIONS WORM GEARBOX - FLANGE MOUNTED

GS315–GS500

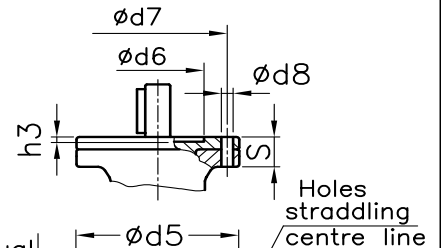
Mounting flange for multi-turn actuator EN ISO 5210



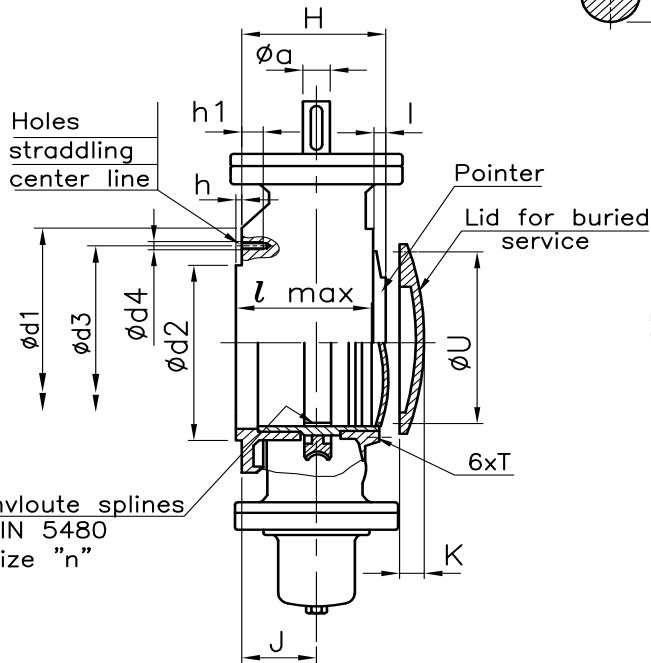
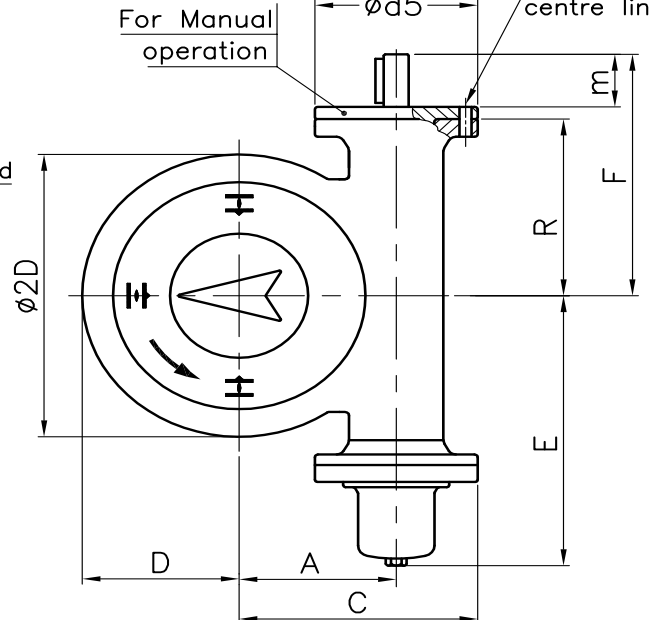
Keyway details at input shaft



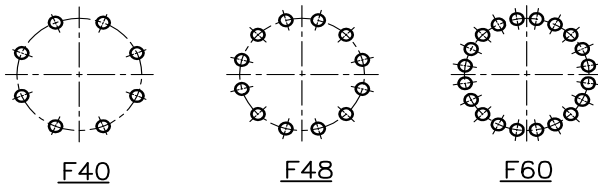
For Electrical operation



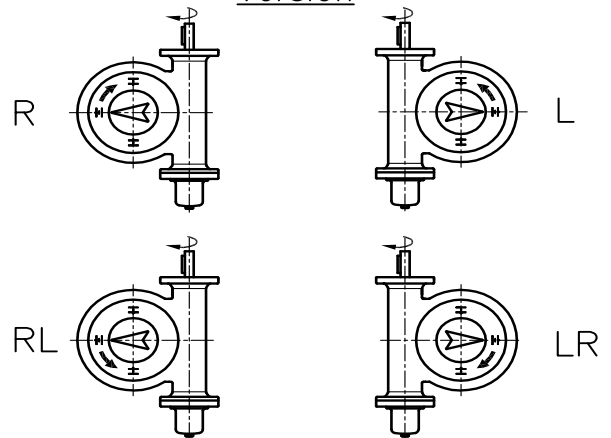
For Manual operation



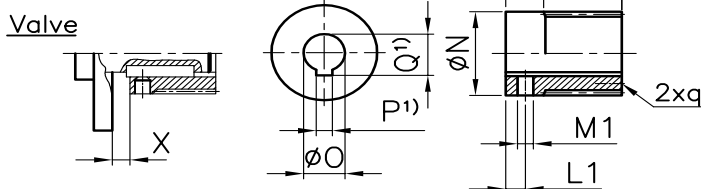
Output drive for valve according to EN ISO 5211



Version



Coupling



1) According to IS:2048 at max. dia "O"

Description of the 4 different versions (With view on pointer cover)

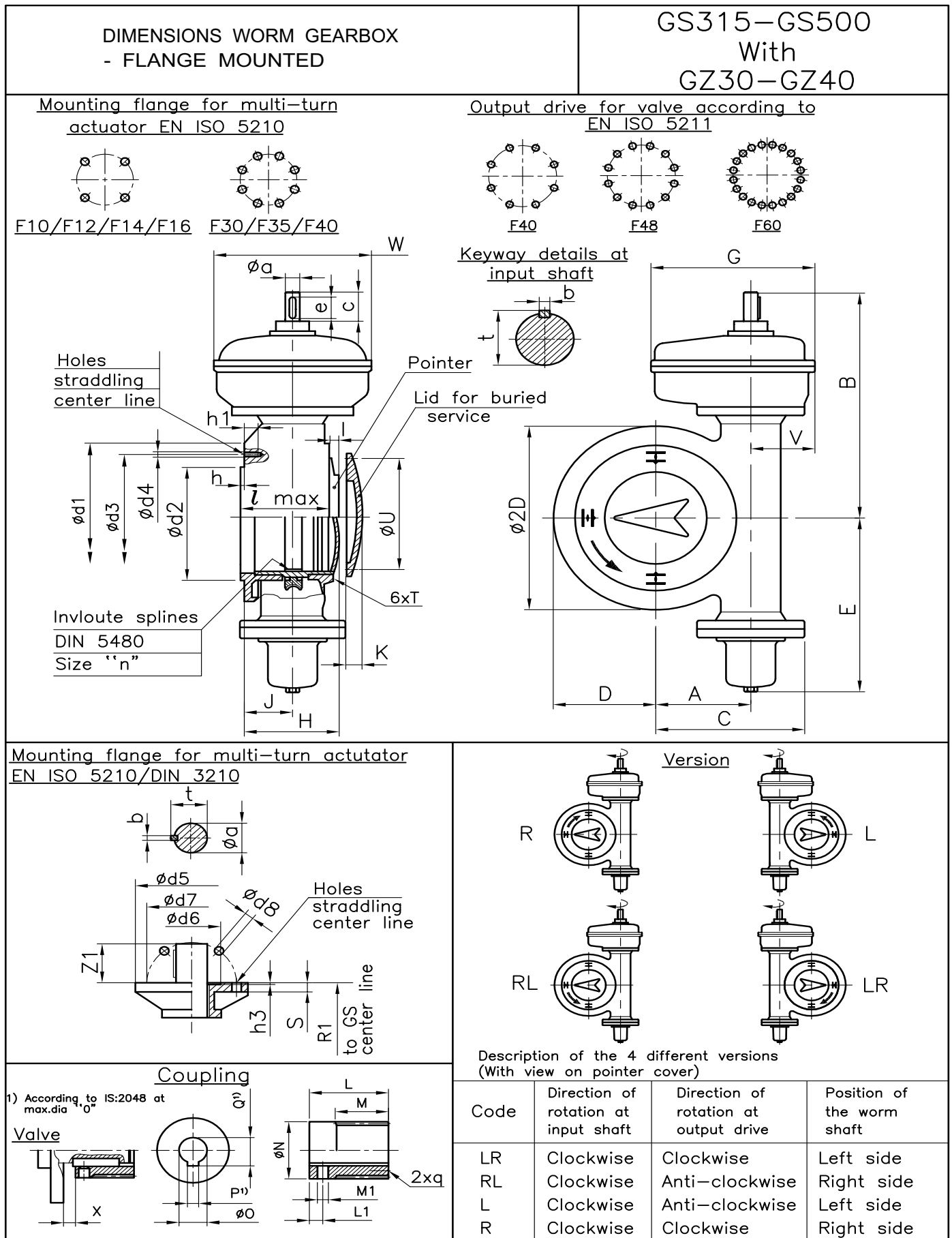
Code	Direction of rotation at input shaft	Direction of rotation at output drive	Position of the worm shaft
LR	Clockwise	Clockwise	Left side
RL	Clockwise	Anti-clockwise	Right side
L	Clockwise	Anti-clockwise	Left side
R	Clockwise	Clockwise	Right side

Dimension Data sheet for Part-turn Worm Gearboxes

DIMENSIONS WORM GEARBOX - FLANGE MOUNTED					GS 315 - GS 500
Dimensions	GS 315		GS 400		GS 500
EN ISO 5211	F40	F48	F48	F60	F60
A	315		400		500
C	490		610		738
D	340		430		540
E	550		765		880
F	500		600		740
H	305	305	370	370	470
I	40		45		55
J	145	145	175	175	225
K	40		45		55
L	203		250		315
L1	25		30		30
M	128		160		195
M1	M16		M20		M20
Ø N	249		338		418
Ø O max	200		250		315
Ø O Pilot bore	60		80		100
P ¹⁾	45		56		70
Q ¹⁾	210.5		262.4		329.4
R	380		480		590
S	40		30		35
T	M12 X 20		M12 X 20		M12 X 20
ØU PCD	310		410		510
X min-max	0 - 26		0 - 36		0 - 40
Øa g6	60		80		100
b	18		22		28
Ød1	475	560	560	686	910
Ød2 f8	300	370	370	470	470
Ød3	406	483	483	603	603
Ød4	M36	M36	M36	M36	M36
Ød5	350		415		475
Ød6 H8	230		260		300
Ød7	298		356		406
Ød8	22		33		39
h	7		7		7
h1	50		50		55
h3	9		12		14
l-max	230		285		375
m	105		120		150
n DIN 5480	250 X 5 X 48		340 X 10 X 32		420 X 10 X 40
q	M12 X 20		M16 X 27		M16 X 27
t	64		85		106

We reserve the right to alter data according to improvements made. Previous documents become invalid with the issue of this document.

Dimension Data sheet for Part-turn Worm Gearboxes



Dimension Data sheet for Part-turn Worm Gearboxes

DIMENSIONS WORM GEARBOX - FLANGE MOUNTED										GS315 / GZ 30 - GS500 / GZ 40				
Dimensions	GS 315/GZ 30						GS 400/GZ 35						GS 500/GZ 40	
GZ Ratio (i)	8:1		16:1		32:1		8:1		16:1		32:1		16:1	32:1
EN ISO 5210	F14		F14		F10		F16		F14		F14		F16	F14
DIN 3210	G½		G½		G0		G3		G½		G½		G3	G½
EN ISO 5211	F40	F48	F40	F48	F40	F48	F48	F60	F48	F60	F48	F60	F60	
A	315						400						500	
B	730			725			846		826				1090	1070
C	490						610						786	
D	340						430						540	
E	550						765						880	
G	666						666						837	
H	305						370						470	
I	40						45						55	
J	145						176						225	
K	40						45						55	
L	203						250						315	
M	128						160						195	
L1	25						30						30	
M1	M16						M20						M20	
Ø N	249						338						418	
Ø O max	200						250						315	
Ø O Pilot bore	60						80						100	
P ¹⁾	45						56						70	
Q ¹⁾	210.5						262.4						329.4	
R1	666			685			766						1010	
T	M12 X 20						M12 X 20						M12 X 20	
Ø U PCD	310						410						510	
V	240						240						295	
W	480						480						590	
X min - max	0-26						0-36						0-40	
Øa g6	30			20			40		30				40	30
c	63			43			73		63				73	63
Ø d1	475	560	475	560	475	560	560	686	560	686	560	686	910	
Ø d2 f8	300	370	300	370	300	370	370	470	370	470	370	470	470	
Ø d3	406	483	406	483	406	483	483	603	483	603	483	603	603	
Ø d4	M36						M36						M36	
e	55			38			65		55				65	55
h	7						7						7	
h1	50						50						65	
l max	230						285						375	
n' DIN 5480	250 X 5 X 48						340 X 10 X 32						420 X 10 X 40	
q	M12 X 20						M16 X 27						M16 X 27	

Mounting flanges for multi-turn actuator

EN ISO 5210	DIN 3210	Øa g6	b	Ød5	Ød6 H8	Ød7	Ød8	h3	z1	t	Weight	
											kg	lbs
F10	-	20	6	125	70	102	11	4	40	22.5	1	2.2
-	G0	20	6	125	60	102	11	4	40	22.5	1	2.2
F14	G½	30	8	175	100	140	18	5	60	33	2.3	5
F16	G3	40	12	210	130	165	22	6	80	43	5	11

For GS 500/ GZ 40 /GZ 16, i.e. reduction ratio 64:1, refer to separate dimension drawing

We reserve the right to alter data according to improvements made. Previous documents become invalid with the issue of this document.