

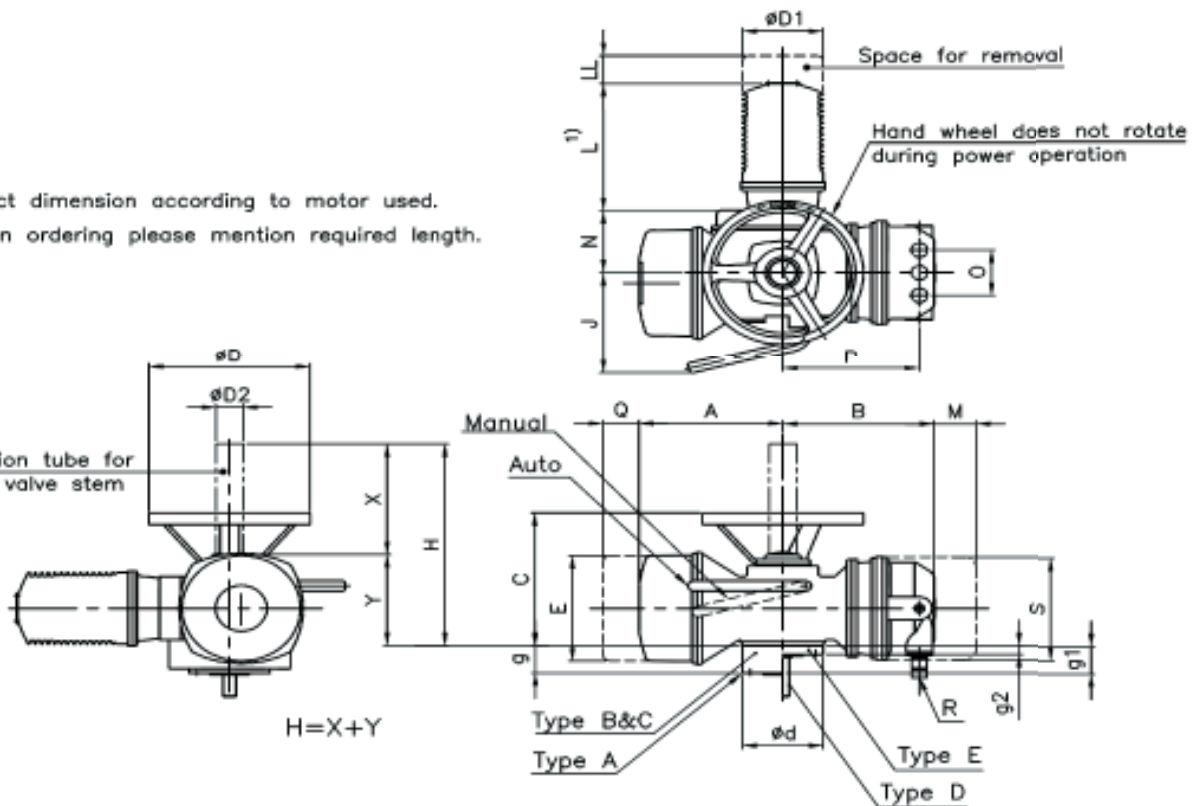
Dimension Sheet, Norm Actuator

Norm Actuator (With Plug in Type Customer Terminals)

SA3 – SA100
SAR3 – SAR100

- 1) Exact dimension according to motor used.
2) When ordering please mention required length.

2) Protection tube for raising valve stem



Dimensions	SA3 & SA6 / SAR3 & SAR6	SA12 & SA15 / SAR12 & SAR15	SA25 & SA30 / SAR25 & SAR30	SA50 & SA60 / SAR50 & SAR60	SA100 / SAR100
A	223	223	245	245	275
B	237	237	262	262	287
C	233	235	275	325	380
ØD	250	250	360	640	800
ØD1	110 – 125	110 – 125	110 – 160	125 – 160	125 – 200
ØD2	42 x 3.3	60 x 3.7	76 x 3.7	76 x 3.7	89 x 4.1
ØE	195	195	255	255	255
J	185	185	210	210	230
L max.	175–230	175–230	175–280	210–280	210–305
LL min.	35	35	45	45	60
M min.	80	80	80	80	80
N	110	110	170	170	210
O	100	100	100	100	100
P	212	212	237	237	262
ØQ min	65	65	65	65	65
R (Cable gland thread)	2Nos M32x1.5 1 No M25x1.5	2Nos M32x1.5 1 No M25x1.5	2Nos M32x1.5 1 No M25x1.5	2Nos M32x1.5 1 No M25x1.5	2Nos M32x1.5 1 No M25x1.5
S	180	180	180	180	180
Y	182	185	250	250	306
Ød	125	125	175	175	210
g (TYPE- A)	35 / 73	37 / 67	51 / 95	51 / 95	69 / 119
g1 (TYPE- B & C)	50	50	65	65	80
g2 (TYPE- D & E)	15	15	22	22	30
DIN 3210 Designation	G0	G0	G½	G½	G3

We reserve the right to alter data, dimensions and weights according to improvement made.
Figures and diagrams are not binding.

(all dimensions are in mm)

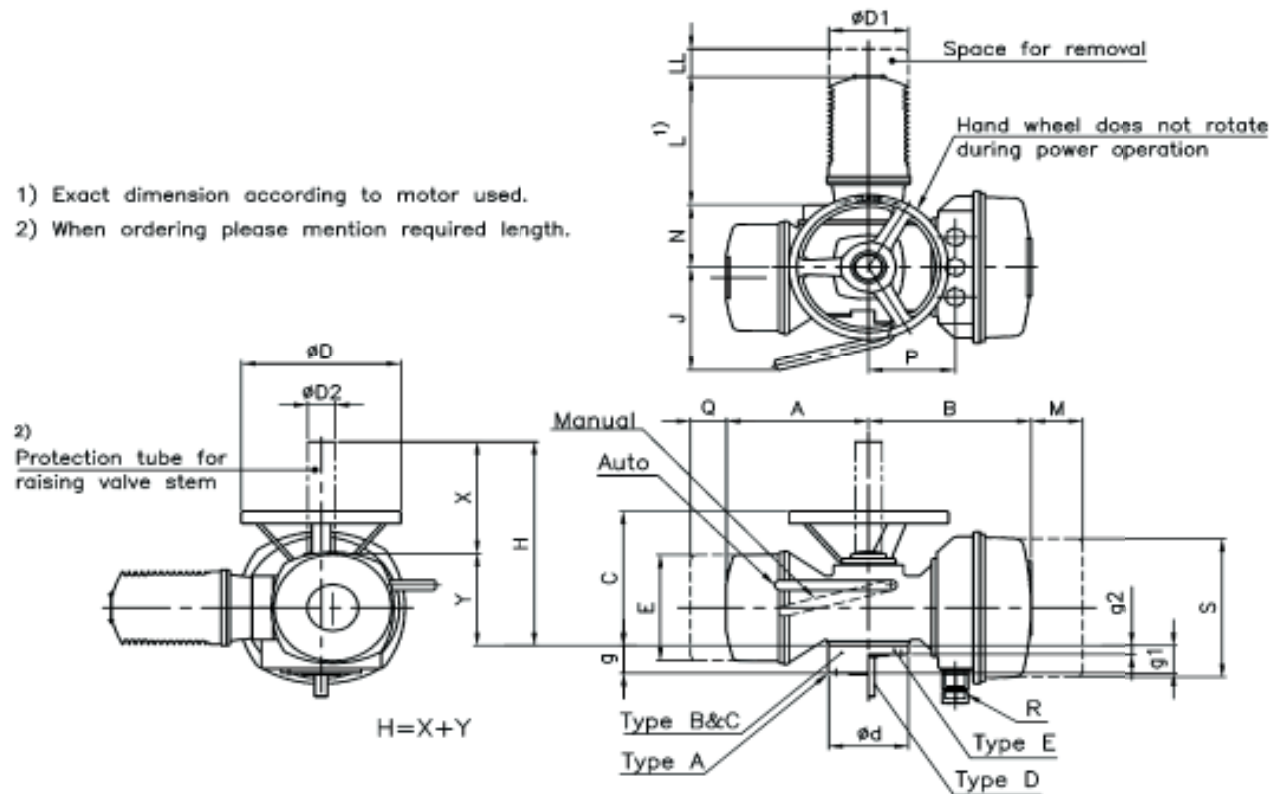
auma

Dimension Sheet, Norm Actuator

Norm Actuator (With Screw Type Customer Terminals)

SA3 – SA100
SAR3 – SAR100

- 1) Exact dimension according to motor used.
2) When ordering please mention required length.



Dimensions	SA3 & SA6 SAR3 & SAR6	SA12 & SA15 SAR12 & SAR15	SA25 & SA30 SAR25 & SAR30	SA50 & SA60 SAR50 & SAR60	SA100 SAR100
A	223	223	245	245	275
B	257	257	282	282	307
C	233	235	275	325	380
ϕD	250	250	360	640	800
$\phi D1$	110 - 125	110 - 125	110 - 160	125 - 160	125 - 200
$\phi D2$	42 x 3.3	60 x 3.7	76 x 3.7	76 x 3.7	89 x 4.1
ϕE	195	195	255	255	255
J	185	185	210	210	230
L max.	175-230	175-230	175-280	210-280	210-305
LL min.	35	35	45	45	60
M min.	80	80	80	80	80
N	110	110	170	170	210
P	142	142	167	167	192
ϕQ min	65	65	65	65	65
R (Cable gland thread)	2Nos M32x1.5 1 No M25x1.5	2Nos M32x1.5 1 No M25x1.5	2Nos M32x1.5 1 No M25x1.5	2Nos M32x1.5 1 No M25x1.5	2Nos M32x1.5 1 No M25x1.5
S	255	255	255	255	255
Y	182	185	250	250	306
ϕd	125	125	175	175	210
g (TYPE- A)	35	37	51	51	69
g1 (TYPE- B & C)	50	50	65	65	80
g2 (TYPE- D & E)	15	15	22	22	30
DIN 3210 Designation	G0	G0	G½	G½	G3

We reserve the right to alter data, dimensions and weights according to improvement made.
Figures and diagrams are not binding.

(all dimensions are in mm)

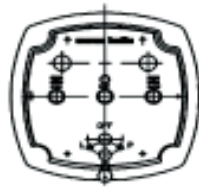
auma®

Dimension Sheet, e-pac Actuator

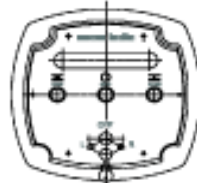
Integral Starter e-pac Actuator

(With Plug in Type Customer Terminals)

SA3 - SA100
SAR3 - SAR100



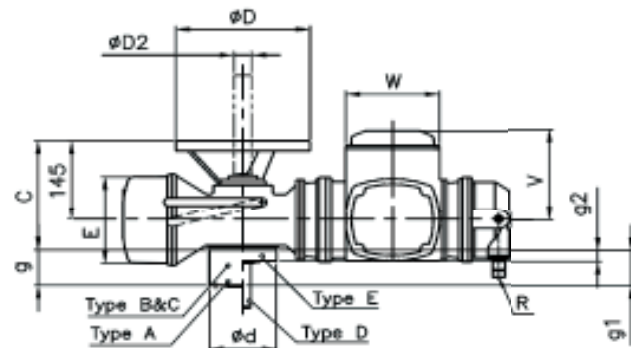
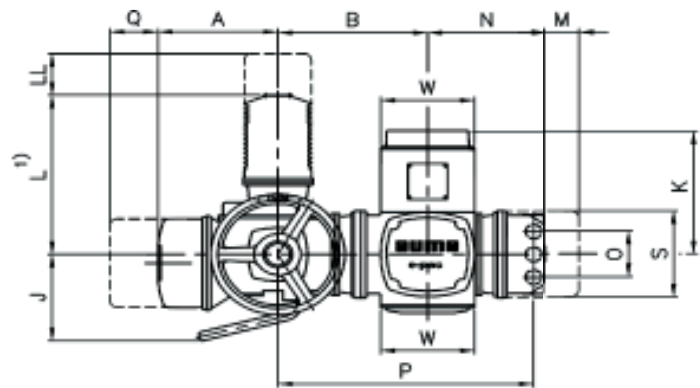
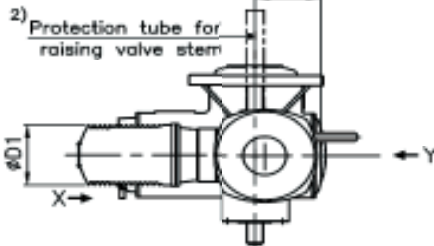
VIEW-X
(For on-off Duty)



VIEW-X
(For Regulating Duty)



VIEW-Y
(Display board-For on-off)



- 1) Exact dimension according to motor used.
2) When ordering please mention required length.

Dimensions	SA3 & SA6 / SAR3 & SAR6	SA12 & SA15 / SAR12 & SAR15	SA25 & SA30 / SAR25 & SAR30	SA50 & SA60 / SAR50 & SAR60	SA100 / SAR100
A	223	223	245	245	275
B	278.5	278.5	303.5	303.5	329.5
C	233	235	275	325	380
øD	250	250	360	640	800
øD1	110 - 125	110 - 125	110 - 160	125 - 160	125 - 200
øD2	42 x 3.3	60 x 3.7	76 x 3.7	76 x 3.7	89 x 4.1
øE	195	195	255	255	255
J	185	185	210	210	230
K	256	256	256	256	256
L max.	340	340	450	450	515
LL min.	35	35	45	45	60
M min.	80	80	80	80	80
N	220.5	220.5	220.5	220.5	220.5
O	100	100	100	100	100
P	474	474	499	499	525
øQ min	65	65	65	65	65
R (Cable gland thread)	2Nos M32x1.5 1 No M25x1.5	2Nos M32x1.5 1 No M25x1.5	2Nos M32x1.5 1 No M25x1.5	2Nos M32x1.5 1 No M25x1.5	2Nos M32x1.5 1 No M25x1.5
S	180	180	180	180	180
V	185	185	185	185	185
W	175	175	175	175	175
Z	121	121	121	121	121
ød	125	125	175	175	210
g (TYPE- A)	35 / 73	37 / 67	51 / 95	51 / 95	69 / 119
g1 (TYPE- B & C)	50	50	65	65	80
g2 (TYPE- D & E)	15	15	22	22	30
DIN 3210 Designation	G0	G0	G½	G½	G3

We reserve the right to alter data, dimensions and weights according to improvement mode.
Figures and diagrams are not binding.

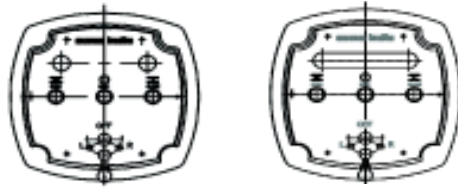
(all dimensions are in mm)

suma

Integral Starter epac Actuator

(With Screw Type Customer Terminals)

SA3 – SA100
SAR3 – SAR100

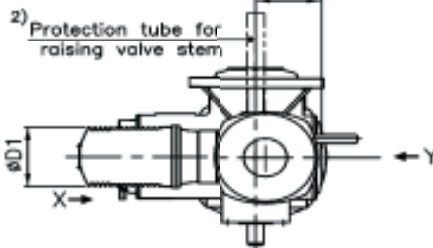


VIEW-X
(For on-off Duty)

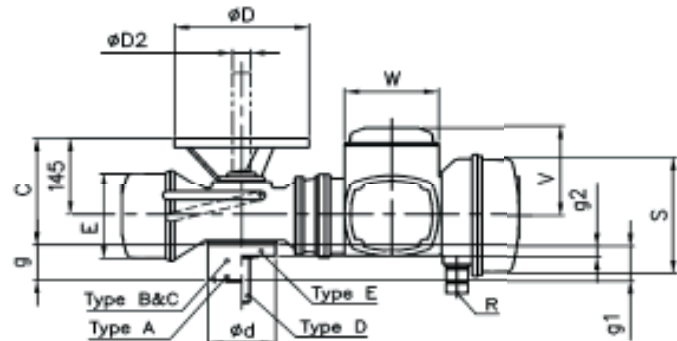
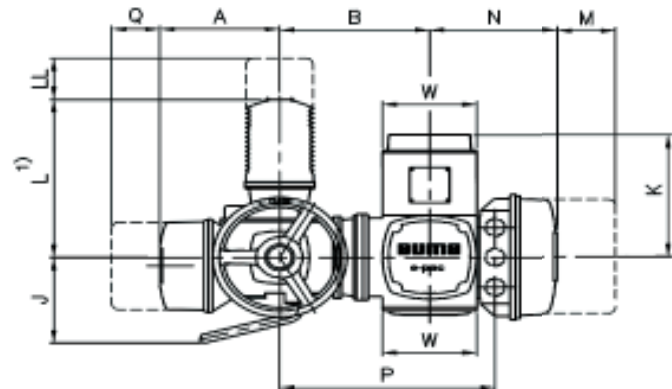
VIEW-X
(For Regulating Duty)



VIEW-Y
(Display board-For on-off)



2) Protection tube for raising valve stem



- 1) Exact dimension according to motor used.
2) When ordering please mention required length.

Dimensions	SA3 & SA6 / SAR3 & SAR6	SA12 & SA15 / SAR12 & SAR15	SA25 & SA30 / SAR25 & SAR30	SA50 & SA60 / SAR50 & SAR60	SA100 / SAR100
A	223	223	245	245	275
B	278.5	278.5	303.5	303.5	329.5
C	233	235	275	325	380
øD	250	250	360	640	800
øD1	110 – 125	110 – 125	110 – 160	125 – 160	125 – 200
øD2	42 x 3.3	60 x 3.7	76 x 3.7	76 x 3.7	89 x 4.1
øE	195	195	255	255	255
J	185	185	210	210	230
K	256	256	256	256	256
L max.	340	340	450	450	515
LL min.	35	35	45	45	60
M min.	80	80	80	80	80
N	240.5	240.5	240.5	240.5	240.5
P	400.5	400.5	425.5	425.5	451.5
øQ min	65	65	65	65	65
R (Cable gland thread)	2Nos M32x1.5 1 No M25x1.5	2Nos M32x1.5 1 No M25x1.5	2Nos M32x1.5 1 No M25x1.5	2Nos M32x1.5 1 No M25x1.5	2Nos M32x1.5 1 No M25x1.5
S	255	255	255	255	255
V	185	185	185	185	185
W	175	175	175	175	175
Z	121	121	121	121	121
ød	125	125	175	175	210
g (TYPE- A)	35	37	51	51	69
g1 (TYPE- B & C)	50	50	65	65	80
g2 (TYPE- D & E)	15	15	22	22	30
DIN 3210 Designation	G0	G0	G½	G½	G3

We reserve the right to alter data, dimensions and weights according to improvement made.
Figures and diagrams are not binding.

(all dimensions are in mm)

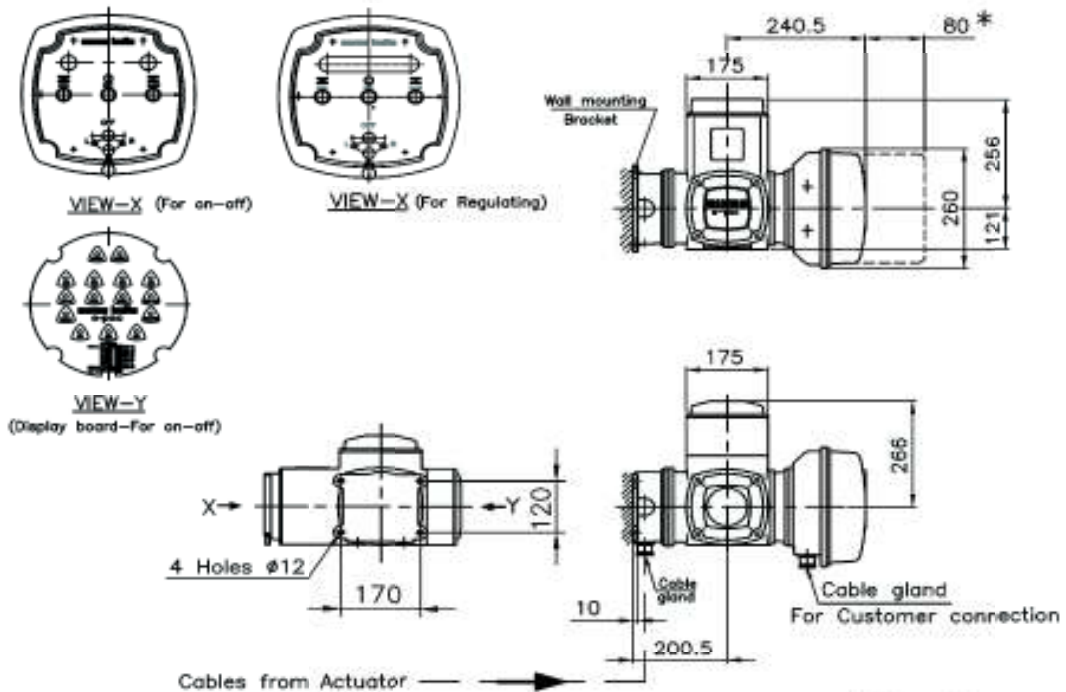
auma®

Dimension Sheet, Wall Mountable e-pac Actuator

Wall Mountable e-pac

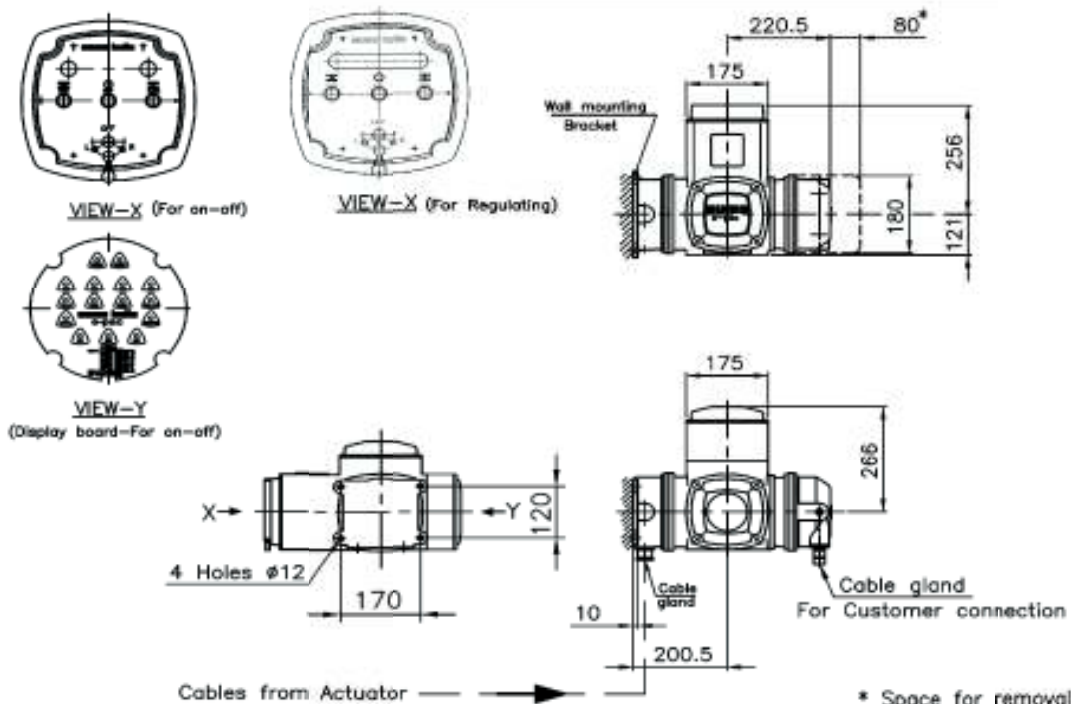
SA3 - SA100
SAR3 - SAR100

With Screw Type Customer Terminals



* Space for removal

With Plug in Type Customer Terminals



* Space for removal

We reserve the right to alter data, dimensions and weights according to improvement made.
Figures and diagrams are not binding.

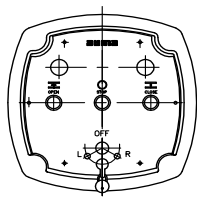
(all dimensions are in mm)

auma[®]

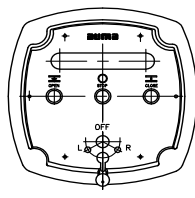
Dimension Sheet, Sempact/ e-pac C Actuator

Sempact Actuator / Epac-C (With Plug in Type Customer Terminals)

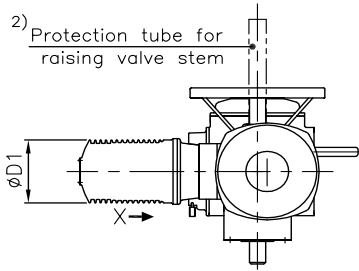
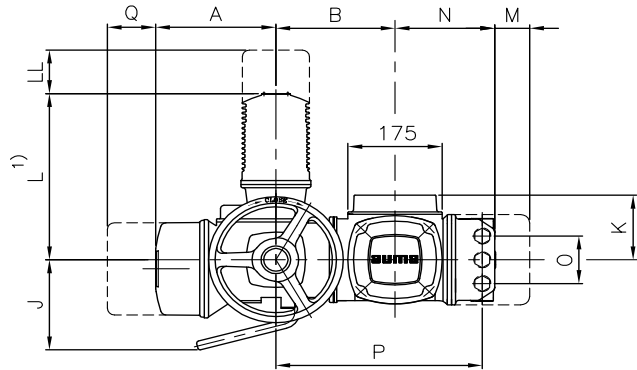
SA3 – SA100
SAR3 – SAR100



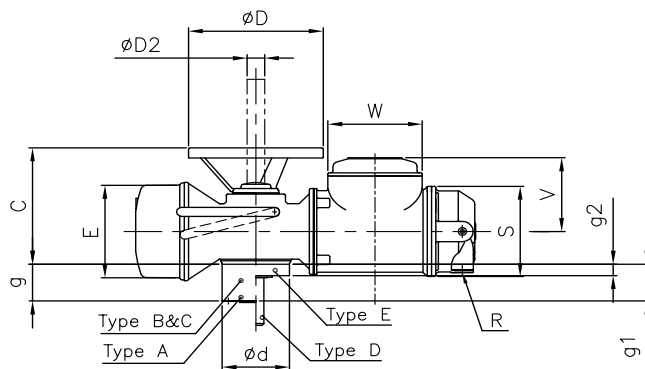
VIEW-X
(For Sempact)



VIEW-X
(For Epac-C)



2) Protection tube for raising valve stem



- 1) Exact dimension according to motor used.
- 2) When ordering please mention required length.

Dimensions	SA3 & SA6 / SAR3 & SAR6	SA12 & SA15 / SAR12 & SAR15	SA25 & SA30 / SAR25 & SAR30	SA50 & SA60 / SAR50 & SAR60	SA100 / SAR100
A	223	223	245	245	275
B	221	221	246	246	272
C	233	235	275	325	380
ØD	250	250	360	640	800
ØD1	110 – 125	110 – 125	110 – 160	125 – 160	125 – 200
ØD2	42 x 3.3	60 x 3.7	76 x 3.7	76 x 3.7	89 x 4.1
ØE	195	195	255	255	255
J	180	180	210	210	230
K	128	128	128	128	128
L max.	330	330	450	450	515
LL min.	35	35	45	45	60
M min.	80	80	80	80	80
N	185	185	185	185	185
O	100	100	100	100	100
P	383	383	408	408	434
ØQ min	65	65	65	65	65
R (Cable gland thread)	2Nos M32x1.5 1 No M25x1.5	2Nos M32x1.5 1 No M25x1.5	2Nos M32x1.5 1 No M25x1.5	2Nos M32x1.5 1 No M25x1.5	2Nos M32x1.5 1 No M25x1.5
S	180	180	180	180	180
V	148	148	148	148	148
W	175	175	175	175	175
Ød	125	125	175	175	210
g (TYPE- A)	35 / 73	37 / 67	51 / 95	51 / 95	69 / 119
g1 (TYPE- B & C)	50	50	65	65	80
g2 (TYPE- D & E)	15	15	22	22	30
DIN 3210 Designation	G0	G0	G½	G½	G3

We reserve the right to alter data, dimensions and weights according to improvement made.
Figures and diagrams are not binding.

(all dimensions are in mm)

Dimension Sheet, Output Drives

Output drives according to DIN 3210

SA3 – SA100
SAR6 – SAR100

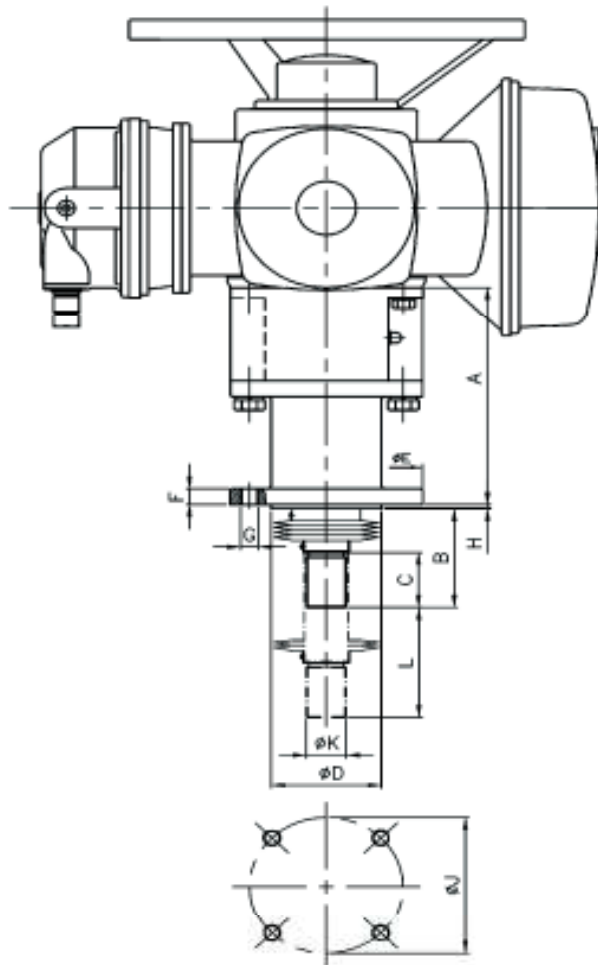
TYPE-A Stem nut		Dimensions (in mm)	SA3/SA6	SAR3/SAR6	SA12/SA15	SAR12/SAR15	SA25/SA30	SAR25/SAR30	SA50/SA80	SAR50/SAR80	SA100/SAR100	
		DIN 3210	G0	G0	G 1/2	G 1/2	G3					
		F max. kN	25/40	40	60	120	160	190				
		ϕd_1	125	125	125	125	175	210				
		ϕd_2 r8	60	60	60	100	100	130				
		ϕd_3	M 10	M 10	M 10	M 16	M 16	M 20				
		ϕd_4	28	40	40	55	55	70				
		ϕd_5 max.	26	38	38	52	52	65				
		g	35	73	37	67	51	95	51	95	69	
		h1	3	3	3	4	4	5				
		h2	15	15	15	22	22	30				
		ϕk	102	102	102	140	140	165				
		L1	1	1	1	2	2	3				
		L2	30	67	37	67	51	95	51	95	70	
		Z	4	4	4	4	4	4				
		Weight kg	1.7	3.9	2	4.2	6	12	6	12	12	
Arrangement of holes ϕd_3												
TYPE-B Plug sleeve			b1 JS9	12	12	18	18	22				
		ϕd_4	28	40	40	55	55	70				
		ϕd_5	26	38	38	52	52	65				
		ϕd_6 h8	42	42	42	60	60	80				
		g1	50	50	50	65	65	80				
		h1	3	3	3	4	4	4				
		L3	45	45	45	65	65	80				
		t1	45.3	45.3	45.3	64.4	64.4	85.4				
		Weight kg	1.7	2	2	6	6	12				
TYPE-C Dog coupling			b2 H11	14	14	20	20	24				
		ϕd_4	28	40	40	55	55	70				
		ϕd_5 DIN:3210	28	28	28	38	38	47				
		ϕd_6 max.	26	38	38	52	52	65				
		ϕd_7	50	50	50	75	75	100				
		g1	50	50	50	65	65	80				
		h1	3	3	3	4	4	4				
		h3	10	10	10	12	12	15				
		Weight kg	1.7	2	2	6	6	12				
TYPE-D Stub shaft			b3 H9	6	6	8	8	12				
		ϕd_8 g6	20	20	20	30	30	40				
		ϕg_2	15	15	15	22	22	30				
		L4	50	50	50	70	70	90				
		L5	55	55	55	76	76	96				
		t2	22.5	22.5	22.5	33	33	43				
		Weight kg	1	1.5	1.5	3.5	3.5	6				
TYPE-E Bore with keyway			b4 JS9	6	6	8	8	12				
		ϕd_9 h8 DIN3210	20	20	20	30	30	40				
		ϕd_9 max.	20	32	32	45	45	60				
		g2	15	15	15	22	22	30				
		h1	3	3	3	4	4	4				
		L6	55	56	56	77	77	100				
		t3	22.8	22.8	22.8	33.3	33.3	43.3				
		Weight kg	1	1.5	1.5	3.5	3.5	6				

auma®

Dimension Sheet, Linear Thrust Unit

Linear Thrust Unit for control valves

SA/SAR3 – SA/SAR100
with
LTU6 – LTU100



For all other dimensions of actuator, please refer separate data sheet

(all dimensions are in mm)

Dimensions	LTU6		LTU12		LTU25		LTU50		LTU100		
	SA / SAR3	SA / SAR6	SA / SAR12	SA / SAR25	SA / SAR50	SA / SAR100					
Stroke (L) mm	50	100	60	120	80	160	80	160	130		
Thrust max. kN	10		20		35		63		100		175
Thrust max. kN for Regulating	5		10		18		31.5		50		87.5
Stem thread, LH	Tr. 24x5		Tr. 32x6		Tr. 40x7		Tr. 50x8		Tr. 60x9		
A	150	200	150	200	155	215	219	299	219	299	302
B	57		67		99		99		128		
C	25		30		55		55		75		
øD	70		70		100		100		130		
øE	125		125		175		175		210		
F	15		15		16		16		20		
G	M10		M10		M16		M16		M20		
H	3		3		4		4		4		
øJ	102		102		140		140		165		
øK	M16x1.5		M20x1.5		M36x3		M36x3		M42x3		

auma®