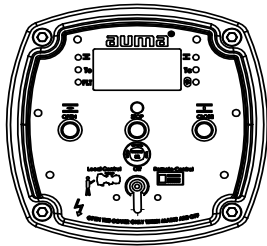


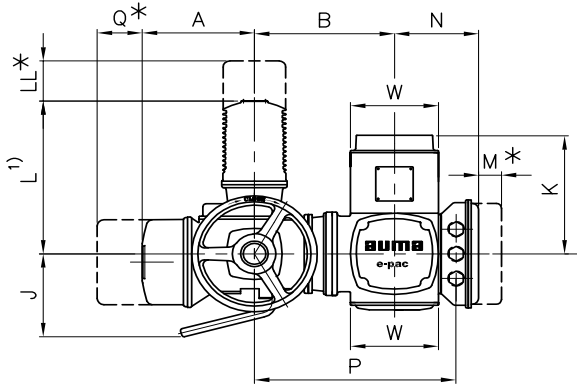
AUMA ACTUATORS IN SIL VERSION - DIMENSION SHEET

Electric Actuator with epac controls in SIL version (Hardwired Interface)

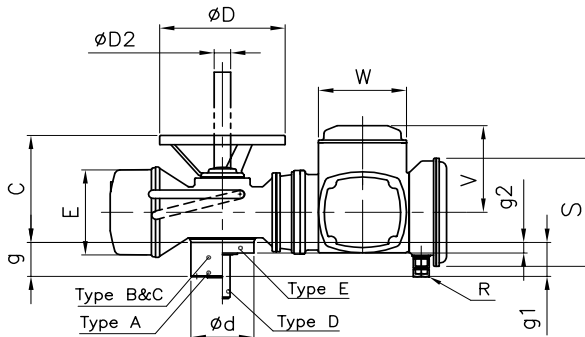
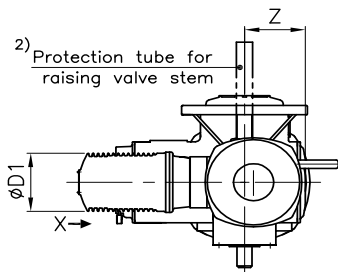
SA3 – SA100
SAR3 – SAR100



VIEW-X
(For Epac-SIL)



* Space for removal



- 1) Exact dimension according to motor used.
- 2) When ordering please mention required length.

Dimensions	SA3 & SA6 SAR3 & SAR6	SA12 & SA15 SAR12 & SAR15	SA25 & SA30 SAR25 & SAR30	SA50 & SA60 SAR50 & SAR60	SA100 SAR100
A	223	223	245	245	275
B	278.5	278.5	303.5	303.5	329.5
C	233	235	275	325	380
ØD	250	250	360	640	800
ØD1	110 – 125	110 – 125	110 – 160	125 – 160	125 – 200
ØD2	42 x 3.3	60 x 3.7	76 x 3.7	76 x 3.7	89 x 4.1
ØE	195	195	255	255	255
J	185	185	210	210	230
K	256	256	256	256	256
L max.	340	340	450	450	515
LL min.	35	35	45	45	60
M min.	40	40	40	40	40
N	240.5	240.5	240.5	240.5	240.5
P	400.5	400.5	425.5	425.5	451.5
ØQ min	65	65	65	65	65
R (Cable gland thread)	2Nos M32x1.5 1 No M25x1.5	2Nos M32x1.5 1 No M25x1.5	2Nos M32x1.5 1 No M25x1.5	2Nos M32x1.5 1 No M25x1.5	2Nos M32x1.5 1 No M25x1.5
S	255	255	255	255	255
V	185	185	185	185	185
W	175	175	175	175	175
Z	121	121	121	121	121
Ød	125	125	175	175	210
g (TYPE- A)	35	37	51	51	69
g1 (TYPE- B & C)	50	50	65	65	80
g2 (TYPE- D & E)	15	15	22	22	30
DIN 3210 Designation	G0	G0	G½	G½	G3

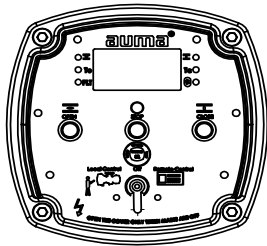
We reserve the right to alter data, dimensions and weights according to improvement made.
Figures and diagrams are not binding.

(all dimensions are in mm)

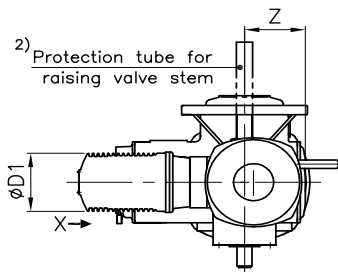
AUMA ACTUATORS IN SIL VERSION - DIMENSION SHEET

Electric Actuator with epac controls in SIL version (Profibus Interface)

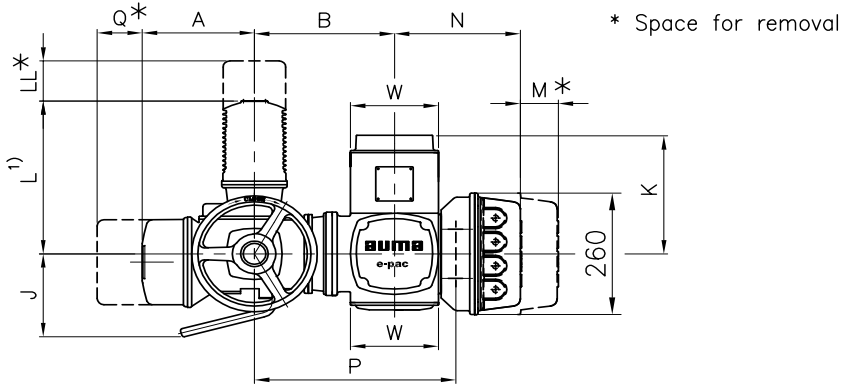
SA3 – SA100
SAR3 – SAR100



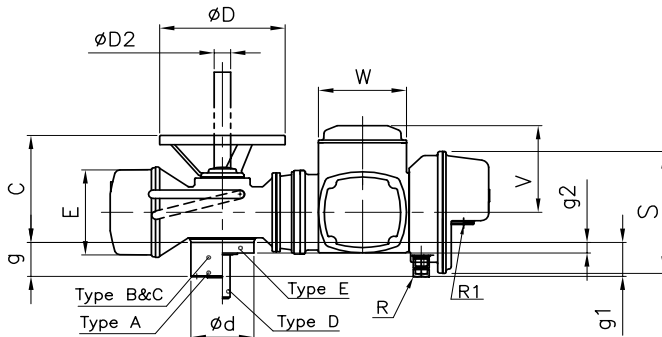
VIEW-X
(For Epac-SIL)



2) Protection tube for raising valve stem



* Space for removal



- 1) Exact dimension according to motor used.
2) When ordering please mention required length.

Dimensions	SA3 & SA6 SAR3 & SAR6	SA12 & SA15 SAR12 & SAR15	SA25 & SA30 SAR25 & SAR30	SA50 & SA60 SAR50 & SAR60	SA100 SAR100
A	223	223	245	245	275
B	278.5	278.5	303.5	303.5	329.5
C	233	235	275	325	380
ØD	250	250	360	640	800
ØD1	110 – 125	110 – 125	110 – 160	125 – 160	125 – 200
ØD2	42 x 3.3	60 x 3.7	76 x 3.7	76 x 3.7	89 x 4.1
ØE	195	195	255	255	255
J	185	185	210	210	230
K	256	256	256	256	256
L max.	340	340	450	450	515
LL min.	35	35	45	45	60
M min.	40	40	40	40	40
N	252	252	252	252	252
P	400.5	400.5	425.5	425.5	451.5
ØQ min	65	65	65	65	65
R (Cable gland thread)	2Nos M32x1.5 1 No M25x1.5	2Nos M32x1.5 1 No M25x1.5	2Nos M32x1.5 1 No M25x1.5	2Nos M32x1.5 1 No M25x1.5	2Nos M32x1.5 1 No M25x1.5
R1 (Cable gland thread)	4 Nos M20x1.5	4 Nos M20x1.5	4 Nos M20x1.5	4 Nos M20x1.5	4 Nos M20x1.5
S	255	255	255	255	255
V	185	185	185	185	185
W	175	175	175	175	175
Z	121	121	121	121	121
Ød	125	125	175	175	210
g (TYPE- A)	35	37	51	51	69
g1 (TYPE- B & C)	50	50	65	65	80
g2 (TYPE- D & E)	15	15	22	22	30
DIN 3210 Designation	G0	G0	G½	G½	G3

We reserve the right to alter data, dimensions and weights according to improvement made.
Figures and diagrams are not binding.

(all dimensions are in mm)

Dimension Sheet, Output Drives

Output drives according to DIN 3210

SA3 - SA100
SAR6 - SAR100

Dimension (in mm)	SA3/ SA6	SAR3/ SAR6	SA12/ SA15	SAR12/ SAR15	SA25/ SA30	SAR25/ SAR30	SA50/ SA60	SAR50/ SAR60	SA100/ SAR100	
	G0		G0		G 1/2		G 1/2		G 3	
DIN 3210	G0		G0		G 1/2		G 1/2		G 3	
F max. kN	25/40	40	60		120		160		190	
TYPE-A Stem nut	125		125		175		175		210	
TYPE-B Plug sleeve	60		60		100		100		130	
TYPE-C Dog coupling	M 10		M 10		M 16		M 16		M 20	
TYPE-D Stub shaft	28		40		55		55		70	
TYPE-E Bore with keyway	26		38		52		52		65	
g	35	73	37	67	51	95	51	95	69	119
h1	3		3		4		4		5	
h2	15		15		22		22		30	
Øk	102		102		140		140		165	
L1	1		1		2		2		3	
L2	30	67	37	67	51	95	51	95	70	120
Z	4		4		4		4		4	
Weight	1.7	3.9	2	4.2	6	12	6	12	12	28
b1 JS9	12		12		18		18		22	
Ød4	28		40		55		55		70	
Ød5	26		38		52		52		65	
Ød6 H8	42		42		60		60		80	
g1	50		50		65		65		80	
h1	3		3		4		4		4	
IL3	45		45		65		65		80	
t1	45.3		45.3		64.4		64.4		85.4	
Weight kg	1.7		2		6		6		12	
b2 H11	14		14		20		20		24	
Ød4	28		40		55		55		70	
Ød5 DIN:3210	28		28		38		38		47	
Ød5 max.	26		38		52		52		65	
Ød7	50		50		75		75		100	
g1	50		50		65		65		80	
h1	3		3		4		4		4	
h3	10		10		12		12		15	
Weight kg	1.7		2		6		6		12	
b3 h9	6		6		8		8		12	
Ød8 g6	20		20		30		30		40	
Øg2	15		15		22		22		30	
L4	50		50		70		70		90	
L5	55		55		76		76		96	
t2	22.5		22.5		33		33		43	
Weight kg	1		1.5		3.5		3.5		6	
b4 JS9	6		6		8		8		12	
Ød9 H8 Din3210	20		20		30		30		40	
Ød9 max.	20		32		45		45		60	
g2	15		15		22		22		30	
h1	3		3		4		4		4	
L6	55		56		77		77		100	
t3	22.8		22.8		33.3		33.3		43.3	
Weight kg	1		1.5		3.5		3.5		6	

auma®