

# Award-winning desalination plant benefits from versatile actuator mounting

Keppel Marina East Desalination Plant, Singapore

## AR21003 | AUMA APPLICATION REPORT



Singapore's new Keppel Marina East Desalination Plant relies on 156 AUMA SA and SQ actuators installed throughout the entire treatment facilities.

Keppel Marina East Desalination Plant (KMEDP), selected as 'Desalination plant of the year' at the Global Water Awards 2021, is Singapore's first large-scale, dual-mode desalination plant, designed to treat both seawater and rainwater drawn from the Marina Reservoir. With a capacity of 137,000 cubic meters (36 million gallons) per day, KMEDP gives Singapore an important weather-independent water supply. The plant uses state-of-the-art technologies to increase its energy efficiency and reduce its environmental impact.

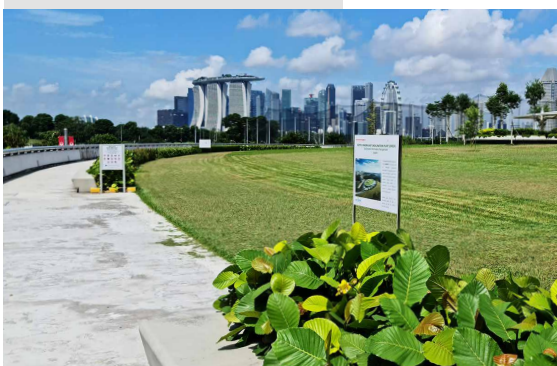
### FLEXIBLE MOUNTING SOLVES ACCESS CHALLENGE

At the design stage, PUB, Singapore's national water authority, was concerned that a large number of actuators would be installed in hard-to-access areas. AUMA, who had already cooperated with PUB on numerous projects in the past, put forward the benefits of its actuators' modular design. The ability to mount the actuator controls separately from the actuator if required, and to orient the display to suit different mounting positions, suited PUB's requirements perfectly.

### TIMELY ON-SITE SERVICE

For Keppel Infrastructure, who has a 25-year Design, Build, Own and Operate (DBOO) concession for the plant, aftersales services with timely on-site support whenever needed was also a critical factor. The AUMA service team is also supporting another business unit of Keppel for the Senoko Waste to Energy Plant, where AUMA Singapore has a servicing and maintenance contract. AUMA's track record of timely support and technical know-how convinced Keppel that they can depend on AUMA for any issues.

With the treatment facilities and pumping station located underground, the plant's 20,000 square meter green rooftop provides a park and recreational area.



WATER

### APPLICATION

Seawater desalination

### AUMA SOLUTION

- > SA / SQ actuators with intelligent AC 01.2 actuator controls
- > Separately mounted actuator controls
- > On-site service

### CUSTOMER BENEFITS

- > Easy access thanks to flexible mounting positions
- > Timely and reliable service

Project responsibility:  
AUMA Singapore

[www.auma.com](http://www.auma.com)

